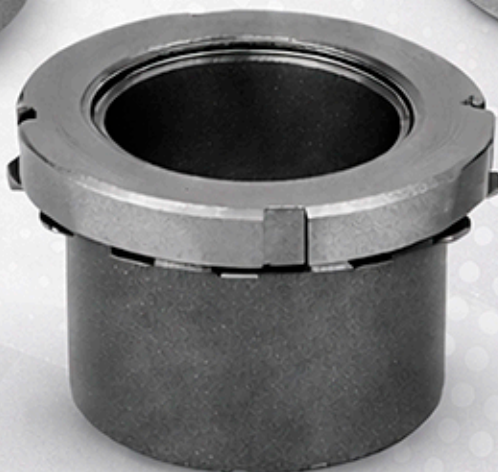
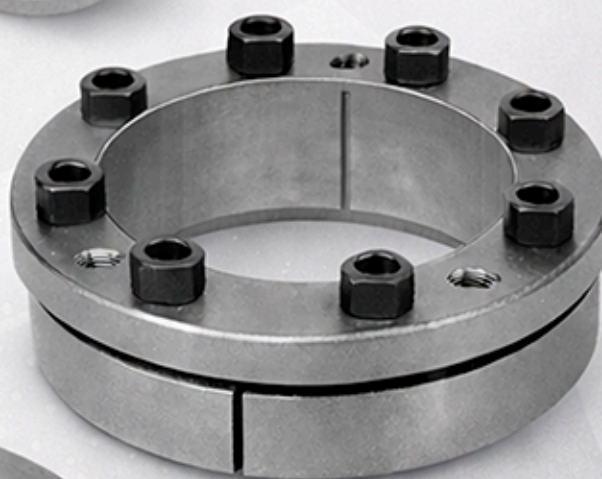
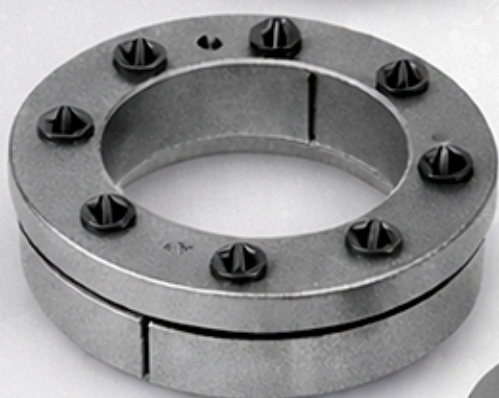
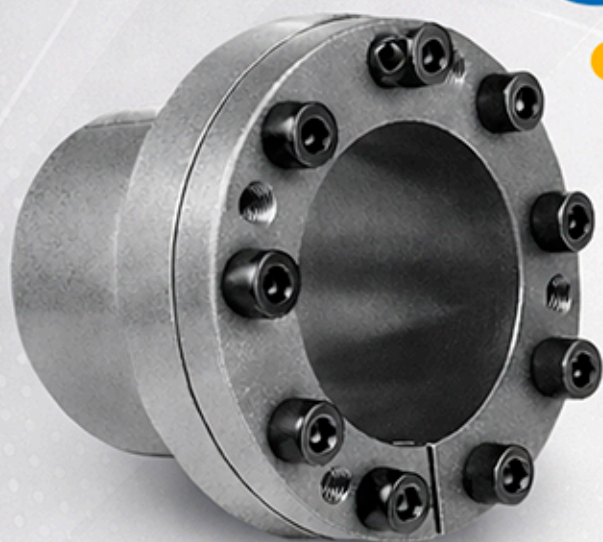




**Suince**  
Group



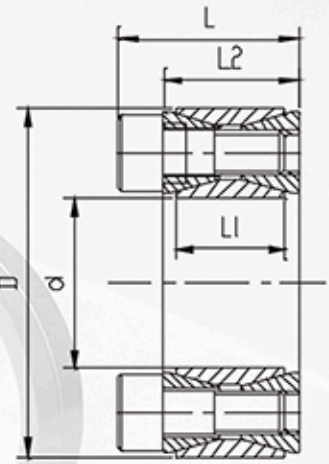
Aros cónicos  
y Acoplamientos  
TAPERED RINGS & COUPLINGS

SIZE:AC-SCE\_01

the size to fix(recommend):

shaft: h8 hub: H8

Similar to JB/T 7934 Z2 Standard



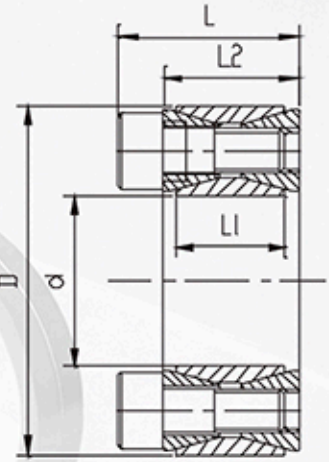
Dimensiones Dimensions					Fuerza axial transmitida Transmitted Axial Force	Torque transmitido Transmitted torque	Presión de Contacto Contacting Pressure		Tornillo de bloqueo DIN912-12.9 DIN912-12.9 Locking Screw		
d	D	L1	L2	L			Eje Shaft	Centro Hub	n	Tamaño Size	Par de Bloqueo Locking Torque
mm	mm	mm	mm	mm	Ft KN	Mt Nm	P N/mm <sup>2</sup>	P1 N/mm <sup>2</sup>		Ts Nm	
19	47	17	20	26	31	298	286	116	8	M6x18	14.9
20	47	17	20	26	31	313	272	116	8	M6x18	14.9
22	47	17	20	26	31	345	247	116	8	M6x18	14.9
24	50	17	20	26	35	424	255	123	9	M6x18	14.9
25	50	17	20	26	35	441	245	123	9	M6x18	14.9
28	55	17	20	26	39	549	243	124	10	M6x18	14.9
30	55	17	20	26	39	588	227	124	10	M6x18	14.9
32	60	17	20	26	47	752	255	136	12	M6x18	14.9
35	60	17	20	26	47	822	233	136	12	M6x18	14.9
38	65	17	20	26	55	1042	250	146	14	M6x18	14.9
40	65	17	20	26	55	1097	238	146	14	M6x18	14.9
42	75	20	24	32	83	1740	291	163	12	M8x22	35
45	75	20	24	32	83	1864	271	163	12	M8x22	35
48	80	20	24	32	83	1988	254	153	12	M8x22	35
50	80	20	24	32	83	2071	244	153	12	M8x22	35
55	85	20	24	32	97	2658	259	168	14	M8x22	35
60	90	20	24	32	97	2900	238	158	14	M8x22	35
65	95	20	24	32	110	3587	250	171	16	M8x22	35
70	110	24	28	38	153	5345	268	171	14	M10x25	69
75	115	24	28	38	153	5727	250	163	14	M10x25	69
80	120	24	28	38	153	6108	235	156	14	M10x25	69
85	125	24	28	38	175	7417	252	172	16	M10x25	69
90	130	24	28	38	175	7854	238	165	16	M10x25	69
95	135	24	28	38	196	9326	254	179	18	M10x25	69
100	145	26	33	45	227	11362	258	178	14	M12x30	123.3
110	155	26	33	45	227	12498	234	166	14	M12x30	123.3
120	165	26	33	45	260	15578	245	178	16	M12x30	123.3
130	180	34	38	50	325	21095	217	156	20	M12x35	123.3
140	190	34	38	50	357	24993	221	163	22	M12x35	123.3
150	200	34	38	50	390	29217	225	169	24	M12x35	123.3
160	210	34	38	50	422	33756	229	174	26	M12x35	123.3
170	225	38	44	58	465	39483	212	160	22	M14x40	187
180	235	38	44	58	507	45606	218	167	24	M14x40	187
190	250	46	52	66	591	56163	199	152	28	M14x45	187
200	260	46	52	66	633	63342	203	156	30	M14x45	187
220	285	50	56	72	745	81960	200	154	26	M16x50	290
240	305	50	56	72	860	103162	211	166	30	M16x50	290

SIZE:AC-SCE\_01

the size to fix(recommend):

shaft: h8 hub: H8

Similar to JB/T 7934 Z2 Standard

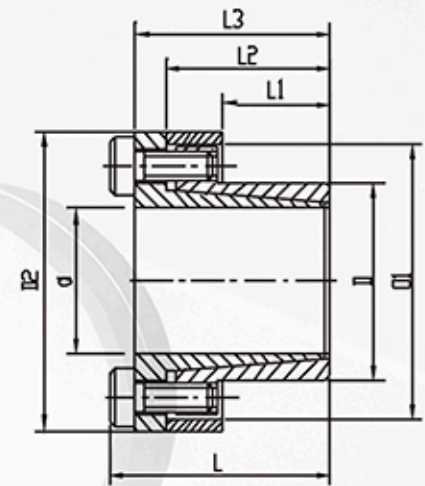
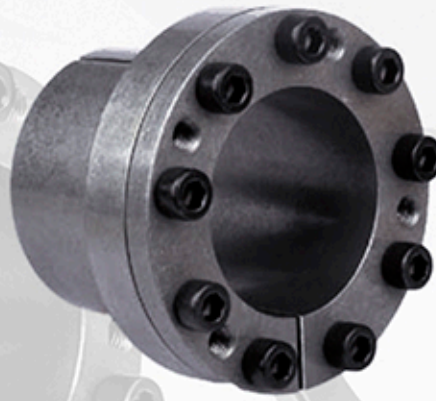


Dimensiones Dimensions					Fuerza axial transmitida Transmitted Axial Force	Torque transmitido Transmitted torque	Presión de Contacto Contacting Pressure		Tornillo de bloqueo DIN912-12.9 DIN912-12.9 Locking Screw		
d	D	L1	L2	L			Eje Shaft	Centro Hub	n	Tamaño Size	Par de Bloqueo Locking Torque
mm	mm	mm	mm	mm	Ft KN	Mt Nm	P N/mm*	P1 N/mm		Ts Nm	
260	325	50	56	72	974	126669	221	177	34	M16X50	290
280	355	60	66	84	1124	157339	197	156	32	M18X60	400
300	375	60	66	84	1264	189653	207	166	36	M18X60	400
320	405	72	78	98	1651	264108	211	167	36	M20X70	580
340	425	72	78	98	1651	280614	199	59	36	M20X70	580
360	455	84	90	112	2017	363061	197	156	36	M22X80	780
380	475	84	90	112	2017	383232	186	149	36	M22X80	780
400	495	84	90	112	2017	403402	177	143	36	M22X80	780
420	515	84	90	112	2241	470633	187	153	40	M22X80	780
440	545	96	102	126	2634	579506	184	148	40	M24X90	1000
460	565	96	102	126	2634	605848	176	143	40	M24X90	1000
480	585	96	102	126	2766	663811	177	145	42	M24X90	1000
500	605	96	102	126	2898	724383	178	147	44	M24X90	1000
520	630	96	102	126	2963	770487	175	144	45	M24X90	1000
540	650	96	102	126	2963	800121	169	140	45	M24X90	1000
560	670	96	102	126	3161	885064	173	145	48	M24X90	1000
580	690	96	102	126	3293	954884	174	147	50	M24X90	1000
600	710	96	102	126	3293	987811	169	142	50	M24X90	1000
620	730	96	102	126	3424	1061550	170	144	52	M24X90	1000
640	750	96	102	126	3556	1137957	171	146	54	M24X90	1000
660	770	96	102	126	3688	1216963	172	147	56	M24X90	1000
680	790	96	102	126	3688	1253841	1671	143	56	M24X90	1000
700	810	96	102	126	3951	1382913	173	150	60	M24X90	1000
720	830	96	102	126	3951	1422425	169	146	60	M24X90	1000
740	850	96	102	126	4083	1510688	169	148	62	M24X90	1000
760	870	96	102	126	4215	1601545	170	149	64	M24X90	1000
780	890	96	102	126	4280	1669384	169	148	65	M24X90	1000
800	910	96	102	126	4346	1738541	167	147	66	M24X90	1000
820	930	96	102	126	4478	1835982	168	148	68	M24X90	1000
840	950	96	102	126	4610	1936101	169	149	70	M24X90	1000
860	970	96	102	126	4741	2038809	169	150	72	M24X90	1000
880	990	96	102	126	4873	2144197	170	151	74	M24X90	1000
900	1010	96	102	126	4939	2222575	169	150	75	M24X90	1000
920	1030	96	102	126	5005	2302221	167	149	76	M24X90	1000
940	1050	96	102	126	5137	2414196	168	150	78	M24X90	1000
960	1070	96	102	126	5268	2528755	169	151	80	M24X90	1000
980	1090	96	102	126	5334	2613719	167	150	81	M24X90	1000
1000	1110	96	102	126	5400	2700000	166	149	82	M24X90	1000

SIZE:AC-SCE\_02

the size to fix(recommend):

shaft: h8 hub: H8



Dimensiones Dimensions								Fuerza axial transmitida Transmitted Axial Force	Torque transmitido Transmitted torque	Presión de Contacto Contacting Pressure		Tornillo de bloqueo DIN912-12.9 DIN912-12.9 Locking Screw		
d mm	D mm	L1 mm	L2 mm	L3 mm	L mm	D2 mm	D1 mm			Eje Shaft P N/mm*	Centro Hub P1 N/mm	n	Tamaño Size	Par de Bloqueo Locking Torque Ts Nm
8	15	12	21	24	28	28	25	10	39	299	159	3	M4X10	4.81
9	16	14	23	27	31	32	28	10	44	227	128	4	M4X12	5.2
10	16	14	23	27	31	32	28	10	49	205	128	4	M4X12	5.2
11	18	14	23	27	31	34	30	10	53	186	114	4	M4X12	5.2
12	18	14	23	27	31	34	30	10	58	171	114	4	M4X12	5.2
14	23	14	23	27	31	39	35	10	68	146	89	4	M4X12	5.2
15	24	16	29	36	42	45	40	16	120	196	123	3	M6X18	17
16	24	16	29	36	42	45	40	16	128	184	123	3	M6X18	13
18	26	18	31	38	44	47	42	21	191	194	134	4	M6X18	17
19	27	18	31	38	44	48	43	21	202	183	129	4	M6X18	17
20	28	18	31	38	44	49	44	21	213	174	124	4	M6X18	15
22	32	25	38	45	51	54	48	21	234	114	78	4	M6X18	17
24	34	25	38	45	51	56	50	21	255	105	74	4	M6X18	17
25	34	25	38	45	51	56	50	21	266	100	74	4	M6X18	17
28	39	25	38	45	51	61	55	27	373	112	81	5	M6X18	17
30	41	25	38	45	51	63	57	32	480	126	92	6	M6X18	17
32	43	30	43	50	56	65	59	32	511	98	73	6	M6X18	17
35	47	30	43	50	56	69	63	43	747	120	89	8	M6X18	17
38	50	30	43	50	56	72	66	43	811	110	84	8	M6X18	17
40	53	32	45	52	58	75	69	48	959	110	83	9	M6X18	17
42	55	32	45	52	58	77	71	79	1007	105	80	9	M6X18	17
45	59	40	56	64	72	85	79	79	1781	130	99	8	M8X22	42
48	62	40	56	64	72	88	82	79	1900	122	94	8	M8X22	42
50	65	50	66	74	82	92	85	99	2473	117	90	10	M8X22	42
55	71	50	66	74	82	98	91	99	2721	106	82	10	M8X22	42
60	77	50	66	74	82	104	97	99	2968	97	76	10	M8X22	42
65	84	50	66	74	82	111	104	99	3215	90	69	10	M8X22	42
70	90	60	80	91	101	122	115	127	4430	89	69	8	M10X25	84
75	95	60	80	91	101	126	119	142	5338	93	74	9	M10X25	84
80	100	65	85	96	106	131	124	190	7595	108	86	12	M10X25	84
85	106	65	85	96	106	137	130	190	8069	101	81	12	M10X25	84
90	112	65	85	96	106	143	136	222	9968	112	90	14	M10X25	84
95	120	65	85	96	106	153	144	222	10522	106	84	14	M10X25	84
100	125	65	89	102	114	162	153	273	13651	124	99	12	M12X30	145
110	140	70	94	107	119	177	168	273	15016	105	82	12	M12X30	145
120	155	90	114	127	139	195	185	364	21844	99	77	16	M12X30	145
130	165	90	114	127	139	205	195	364	23664	92	72	16	M12X30	145
140	175	90	114	127	139	215	205	364	25485	85	68	16	M12X30	145
150	185	90	114	127	139	225	215	364	27305	80	64	16	M12X30	145

SIZE:AC-SCE\_03

Dimensiones Recomendadas

Recommended Dimensions:

Dimensiones Básicas ≤ 38mm

Basic Dimensions ≤ 38mm

h6 Shaft: h6

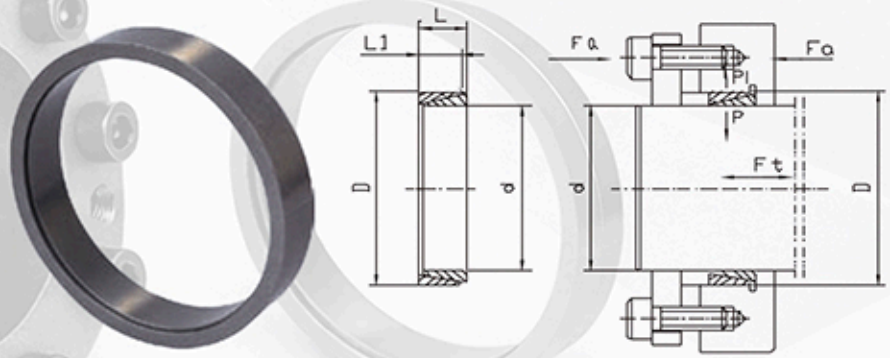
H7 Hub: H7

Dimensiones Básicas ≥ 40mm

Basic Dimension ≥ 40mm

h8 Shaft: h8

H8 Hub: H8



Dimensiones Dimensions				Presión Axial Cargada Loaded Axial Pressure	Fuerza axial transmitida Transmitted Axial Force	Torque transmitido Transmitted Torque	Presión de contacto Contacting Pressure	
d mm	D mm	L mm	L1 mm				Eje Shatf	Centro Hub
				Fa KN	Ft KN	Mt Nm	P N/mm <sup>2</sup>	Ts N/mm <sup>2</sup>
8*	11	4.5	3.7	5.0	1.06	4.2	100	70
9	12	4.5	3.7	13.3	1.29	5.8	100	79
10	13	4.5	3.7	14.4	1.53	7.6	100	86
12	15	4.5	3.7	14.5	1.65	9.9	100	80
13	16	4.5	3.7	14.6	1.76	11.5	100	81
14	18	6.3	5.3	23.8	2.70	18.9	100	77
15	19	6.3	5.3	24.3	2.94	22.1	100	79
16	20	6.3	5.3	24.5	3.18	25.4	100	81
17	21	6.3	5.3	24.9	3.29	28.0	100	80
18	22	6.3	5.3	25.3	3.53	31.8	100	82
19	24	6.3	5.3	29.7	3.76	35.8	100	80
20	25	6.3	5.3	30.1	3.88	38.8	100	79
22	26	6.3	5.3	28.9	4.35	47.9	100	86
24	28	6.3	5.3	30.0	4.70	56.4	100	86
25	30	6.3	5.3	32.4	4.94	61.7	100	84
28	32	6.3	5.3	32.6	5.53	77.4	100	88
30	35	6.3	5.3	35.5	5.88	88.2	100	86
32	36	6.3	5.3	36.7	6.23	100	100	88
35	40	7.0	6.0	45.7	7.76	136	100	88
36	42	7.0	6.0	48.2	8.00	144	100	86
38	44	7.0	6.0	49.7	8.47	161	100	87
40	45	8.0	6.6	58.8	9.8	195	100	89
42	48	8.0	6.6	62.6	10.2	215	100	87
45	52	10.0	8.6	92.2	14.3	323	100	87
48	55	10.0	8.6	94.6	15.3	367	100	88
50	57	10.0	8.6	96.5	15.9	397	100	88
55	62	10.0	8.6	101.8	17.4	479	100	88
56	64	12.0	10.4	128.4	21.5	603	100	88
60	68	12.0	10.4	133.4	23.0	391	100	88
63	71	12.0	10.4	137.3	24.2	763	100	89
65	73	12.0	10.4	140.4	25.0	814	100	89

SIZE:AC-SCE\_03

Dimensiones Recomendadas

Recommended Dimensions:

Dimensiones Básicas ≤ 38mm

Basic Dimensions ≤ 38mm

h6 Shaft: h6

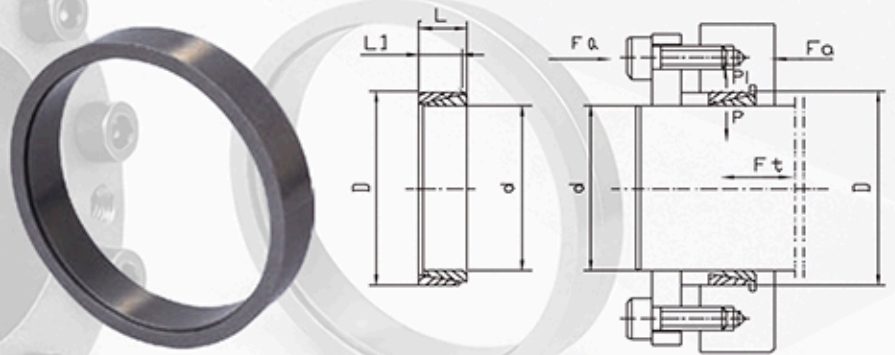
H7 Hub: H7

Dimensiones Básicas ≥ 40mm

Basic Dimension ≥ 40mm

h8 Shaft: h8

H8 Hub: H8



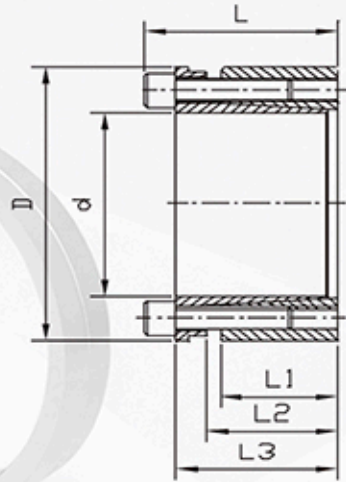
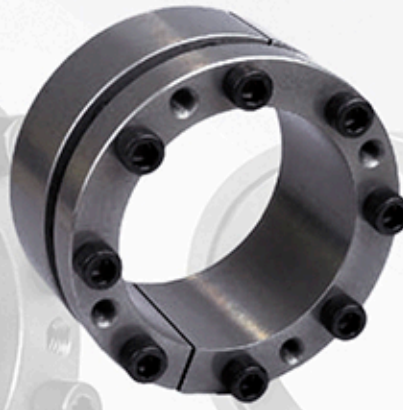
Dimensiones Dimensions				Presión Axial Cargada Loaded Axial Pressure	Fuerza axial transmitida Transmitted Axial Force	Torque transmitido Transmitted Torque	Presión de contacto Contacting Pressure	
							Eje Shaft	Centro Hub
d	D	L	L1	Fa	Ft	Mt	P	Ts
mm	mm	mm	mm	KN	KN	Nm	N/mm <sup>2</sup>	N/mm <sup>2</sup>
70	79	14.0	12.2	176.0	31.6	1107	100	89
71	80	14.0	12.2	178.0	32.0	1136	100	89
75	84	14.0	12.2	189.6	33.8	1266	100	89
80	91	17.0	15.0	251.0	44.2	1769	100	89
90	101	17.0	15.0	272.4	49.9	2244	100	89
100	114	21.0	18.7	377.7	69.0	3452	100	88
110	124	21.0	18.7	415.0	76.0	4178	100	89
120	134	21.0	18.7	440.2	82.8	4967	100	89
130	148	28.0	25.3	654.2	121	7896	100	88
140	158	28.0	25.3	689.0	131	9146	100	89
150	168	28.0	25.3	727.5	140	10505	100	89
160	178	28.0	25.3	764.5	149	11948	100	90
170	191	33.0	30.0	982.5	188	16014	100	89
180	201	33.0	30.0	1027.2	199	17950	100	90
190	211	33.0	30.0	1071.0	210	19987	100	90
200	224	38.0	34.8	1314.0	257	25696	100	89
210	234	38.0	34.8	1366.0	270	28326	100	90
220	244	38.0	34.8	1420.0	283	31098	100	90
230	257	43.0	39.5	1705.0	335	38570	100	89
240	267	43.0	39.5	1767.5	351	42068	100	90
250	280	48.0	44.0	2060.0	407	50906	100	90
26	290	48.0	44.0	2132.0	425	55205	100	90
270	300	48.0	44.0	2207.0	442	59678	100	91
280	313	53.0	49.0	2536.0	507	71042	100	90
290	323	53.0	49.0	2632.0	525	76103	100	90
300	333	53.0	49.0	2704.0	542	81338	100	90
320	360	65.0	59.0	3492.0	697	111504	100	89
340	380	65.0	59.0	3672.0	740	125870	100	89
360	400	65.0	59.0	3858.0	784	141106	100	90
380	420	65.0	59.0	4069.0	828	157235	100	90
400	440	65.0	59.0	4256.0	871	174213	100	91
420	460	65.0	59.0	4444.0	915	192085	100	91
440	480	65.0	59.0	4634.0	958	210805	100	92

AC-SCE\_04

Dimensiones Recomendadas  
Recommended Dimensions:

h8 Shaft: h8

H8 Hub: H8



Dimensiones Dimensions						Fuerza axial transmitida Transmitted Axial Force	Torque transmitido Transmitted torque	Presión de Contacto Contacting Pressure		Tornillo de bloqueo DIN912-12.9 DIN912-12.9 Locking Screw		
								Eje Shaft	Centro Hub	n	Tamaño Size	Par de Bloqueo Locking Torque
d	D	L1	L2	L3	L	Ft	Mt	P	P1			Ts
mm	mm	mm	mm	mm	mm	KN	Nm	N/mm*	N/mm			Nm
19	47	26	31	39	45	32	307	193	78	4	M6X25	17
20	47	26	31	39	45	32	323	183	78	4	M6X25	17
22	47	26	31	39	45	32	355	166	78	4	M6X25	17
24	50	26	31	39	45	48	582	229	110	6	M6X25	17
25	50	26	31	39	45	48	606	220	110	6	M6X25	17
28	55	26	31	39	45	48	679	196	100	6	M6X25	17
30	55	26	31	39	45	48	727	183	100	6	M6X25	17
32	60	26	31	39	45	65	1033	229	122	8	M6X25	17
35	60	26	31	39	45	65	1130	209	122	8	M6X25	17
38	65	26	31	39	45	65	1227	193	113	8	M6X25	17
40	65	26	31	39	45	65	1292	183	113	8	M6X25	17
42	75	30	36	47	55	87	1835	204	115	6	M8X30	41
45	75	30	36	47	55	87	1966	191	115	6	M8X30	41
48	80	30	36	47	55	87	2097	179	107	6	M8X30	41
50	80	30	36	47	55	87	2184	172	107	6	M8X30	41
55	85	30	36	47	55	116	3202	208	135	8	M8X30	41
60	90	30	36	47	55	116	3493	191	127	8	M8X30	41
65	95	30	36	47	55	116	3784	176	120	8	M8X30	41
70	110	40	46	57	67	189	6607	199	127	8	M10X35	83
75	115	40	46	62	72	189	7079	186	121	8	M10X35	83
80	120	40	46	62	72	189	7551	174	116	8	M10X35	83
85	125	40	46	62	72	236	10029	205	139	10	M10X35	83
90	130	40	46	62	72	236	10619	193	134	10	M10X35	83
95	135	40	46	62	72	236	11209	183	129	10	M10X35	83
100	145	46	52	77	89	275	13738	176	121	8	M12X45	145
110	155	46	52	77	89	275	15111	160	114	8	M12X45	145
120	165	46	52	77	89	343	20606	183	133	10	M12X45	145
130	180	46	52	77	89	412	26788	203	147	12	M12X45	145
140	190	51	59	84	98	373	26142	154	114	8	M14X45	230
150	200	51	59	84	98	467	35016	180	135	10	M14X45	230
160	210	51	59	84	98	467	37351	169	129	10	M14X45	230
170	225	51	59	84	98	560	47617	191	144	12	M14X45	230

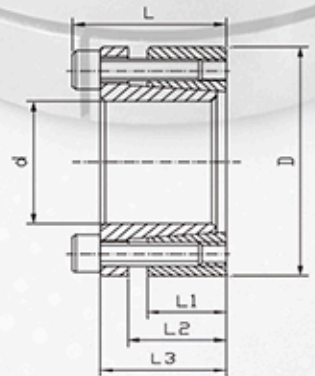
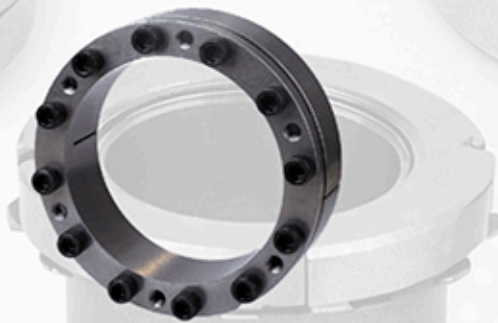
Dimensiones Dimensions						Fuerza axial transmitida Transmitted Axial Force	Torque transmitido Transmitted torque	Presión de Contacto Contacting Pressure		Tornillo de bloqueo DIN912-12.9 DIN912-12.9 Locking Screw		
								Eje Shaft	Centro Hub	n	Tamaño Size	Par de Bloqueo Locking Torque
d	D	L1	L2	L3	L	Ft	Mt	P	PI			
mm	mm	mm	mm	mm	mm	KN	Nm	N/mm*	N/mm		Nm	
180	235	51	59	84	98	560	50418	180	138	12	M14X45	230
190	250	51	59	84	98	700	66526	213	162	15	M14X45	230
200	260	51	59	84	98	700	70027	202	156	15	M14X45	230
220	285	64	72	100	116	757	83243	158	122	12	M16X60	355
240	305	64	72	100	116	946	113517	182	143	15	M16X60	355
260	325	64	72	100	116	1135	147560	201	161	18	M16X60	355
280	355	75	83	123	141	1226	171582	172	136	16	M18X80	485
300	375	75	83	123	141	1379	206809	181	145	18	M18X80	485
320	405	90	98	142	162	1766	282493	181	143	18	M20X100	690
340	425	90	98	142	162	2060	350180	199	159	21	M20X100	690
360	455	110	118	166	188	2164	389480	161	127	18	M22X110	930
380	475	110	118	166	188	2524	479634	178	142	21	M22X110	930
400	495	100	118	166	188	2524	504878	186	150	21	M22X110	930

AC-SCE\_05

Dimensiones Recomendadas  
Recommended Dimensions:

h8 Shaft: h8

H8 Hub: H8



Dimensiones Dimensions						Fuerza axial transmitida Transmitted Axial Force	Torque transmitido Transmitted torque	Presión de Contacto Contacting Pressure		Tornillo de bloqueo DIN912-12.9 DIN912-12.9 Locking Screw		
								Eje Shaft	Centro Hub	n	Tamaño Size	Par de Bloqueo Locking Torque
d	D	L1	L2	L3	L	Ft	Mt	P	PI			
mm	mm	mm	mm	mm	mm	KN	Nm	N/mm*	N/mm		Nm	
19	47	17	22	28	34	29	273	262	106	5	M6X20	13
20	47	17	22	28	34	29	287	249	106	5	M6X20	13
22	47	17	22	28	34	29	316	227	106	5	M6X20	13
24	50	17	22	28	34	34	413	249	120	6	M6X20	13
25	50	17	22	28	34	34	431	239	120	6	M6X20	13
28	55	17	22	28	34	34	482	213	109	6	M6X20	13
30	55	17	22	28	34	34	517	199	109	6	M6X20	13
32	60	17	22	28	34	46	734	249	133	8	M6X20	13
35	60	17	22	28	34	46	803	227	133	8	M6X20	13
38	65	17	22	28	34	46	872	210	122	8	M6X20	13

AC-SCE\_05

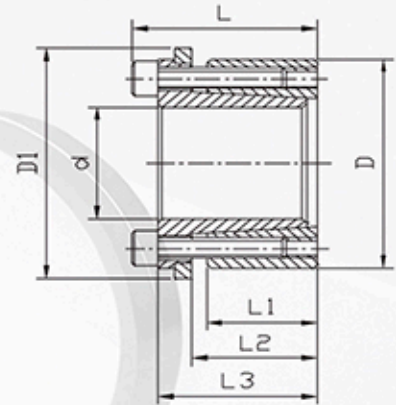
Dimensiones Recomendadas  
Recommended Dimensions:

h8 Shaft: h8

H8 Hub: H8



Dimensiones Dimensions						Fuerza axial transmitida Transmitted Axial Force	Torque transmitido Transmitted torque	Presión de Contacto Contacting Pressure		Tornillo de bloqueo DIN912-12.9 DIN912-12.9 Locking Screw		
								Eje Shaft	Centro Hub	n	Tamaño Size	Par de Bloqueo Locking Torque
d	D	L1	L2	L3	L	Ft	Mt	P	P1			Ts
mm	mm	mm	mm	mm	mm	KN	Nm	N/mm*	N/mm			Nm
40	65	17	22	28	34	46	918	199	122	8	M6X20	13
42	75	20	25	33	41	74	1563	261	146	7	M8X25	32
45	75	20	25	33	41	74	1674	244	146	7	M8X25	32
50	80	20	25	33	41	74	1860	219	137	7	M8X25	32
55	85	20	25	33	41	85	2340	228	148	8	M8X25	32
60	90	20	25	33	41	85	2553	209	139	8	M8X25	32
65	95	20	25	33	41	96	3110	217	149	9	M8X25	32
70	110	24	30	40	50	138	4838	243	154	8	M10X30	36
75	115	24	30	40	50	138	5184	226	148	8	M10X30	65
80	120	24	30	40	50	138	5530	212	142	8	M10X30	65
85	125	24	30	40	50	156	6610	225	153	9	M10X30	65
90	130	24	30	40	50	156	6998	212	147	9	M10X30	65
95	135	24	30	40	50	173	8208	223	157	10	M10X30	65
100	145	26	32	44	56	195	9742	221	152	8	M12X35	110
110	155	26	32	44	56	195	10716	201	143	8	M12X35	110
120	165	26	32	44	56	219	13154	207	151	9	M12X35	110
130	180	34	40	52	64	292	18996	195	141	12	M12X35	110
140	190	34	40	54	68	291	20336	180	133	9	M14X40	170
150	200	34	40	54	68	323	24211	187	140	10	M14X40	170
160	210	34	40	54	68	355	28408	192	147	11	M14X40	170
170	225	44	50	64	78	387	32929	153	115	12	M14X40	170
180	235	44	50	64	78	387	34866	144	110	12	M14X40	170
190	250	44	50	64	78	484	45996	171	130	15	M14X40	170
200	260	44	50	64	78	484	48416	162	125	15	M14X40	170
220	285	50	56	75	91	548	60291	147	113	12	M16X50	275
240	305	50	56	75	91	685	82218	168	132	15	M16X50	275
260	325	50	56	75	91	731	95009	166	133	16	M16X50	275
280	355	60	66	87	105	910	127341	160	126	16	M18X50	385
300	375	60	66	87	105	1023	153479	168	134	18	M18X50	385
320	405	74	81	101	121	1388	222065	140	110	18	M20X50	580
340	425	74	81	101	121	1619	275271	153	123	21	M20X50	580
360	455	86	94	116	138	1697	305480	131	104	18	M22X60	780
380	475	86	94	116	138	1980	376193	145	116	21	M22X60	780
400	495	86	94	116	138	1980	395993	137	111	21	M22X60	780

**AC-SCE\_06**
**Dimensiones Recomendadas  
Recommended Dimensions:**
**h8 Shaft: h8**
**H8 Hub: H8**


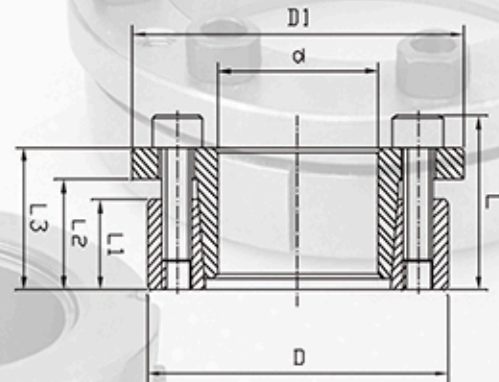
Dimensiones Dimensions							Fuerza axial transmitida Transmitted Axial Force	Torque transmitido Transmitted torque	Presión de Contacto Contacting Pressure		Tornillo de bloqueo DIN912-12.9 DIN912-12.9 Locking Screw			
									Eje Shaft P	Centro Hub P1	n	Tamaño Size	Par de Bloqueo o Locking Torque Ts	
d	D	D1	L1	L2	L3	L	Ft	Mt	N/mm <sup>2</sup>	N/mm <sup>2</sup>				Tamaño Size
mm	mm	mm	mm	mm	mm	mm	KN	Nm						
19	47	53	26	31	39	45	21	202	127	51	4	M6X20	17	
20	47	53	26	31	39	45	21	213	121	51	4	M6X20	17	
22	47	53	26	31	39	45	21	234	110	51	4	M6X20	17	
24	50	56	26	31	39	45	32	384	151	73	6	M6X20	17	
25	50	56	26	31	39	45	32	400	145	73	6	M6X20	17	
28	55	61	26	31	39	45	32	448	129	66	6	M6X20	17	
30	55	61	26	31	39	45	32	480	121	66	6	M6X20	17	
32	60	66	26	31	39	45	43	683	151	81	8	M6X20	17	
35	60	66	26	31	39	45	43	747	138	81	8	M6X20	17	
38	65	71	26	31	39	45	43	811	127	74	8	M6X20	17	
40	65	71	26	31	39	45	43	853	121	74	8	M6X20	17	
42	75	81	30	36	47	55	58	1216	135	73	6	M8X30	41	
45	75	81	30	36	47	55	58	1302	126	73	6	M8X30	41	
48	80	86	30	36	47	55	58	1389	119	71	6	M8X30	41	
50	80	86	30	36	47	55	58	1447	114	71	6	M8X30	41	
55	85	91	30	36	47	55	77	2124	138	89	8	M8X30	41	
60	90	96	30	36	47	55	77	2317	127	84	8	M8X30	41	
65	95	101	30	36	47	55	77	2510	117	80	8	M8X30	41	
70	110	116	40	46	57	67	125	4381	132	84	8	M10X35	83	
75	115	121	40	46	62	72	125	4694	123	80	8	M10X35	83	
80	120	126	40	46	62	72	125	5007	115	77	8	M10X35	83	
85	125	131	40	46	62	72	156	6651	136	92	10	M10X35	83	
90	130	136	40	46	62	72	156	7042	128	89	10	M10X35	83	
95	135	141	40	46	62	72	156	7433	121	85	10	M10X35	83	
100	145	151	46	52	77	89	182	9104	117	81	8	M12X45	145	
110	155	161	46	52	77	89	182	10015	106	75	8	M12X45	145	
120	165	171	46	52	77	89	228	13653	122	88	10	M12X45	145	
130	180	186	46	52	77	89	273	17747	135	97	12	M12X45	145	
140	190	196	51	59	84	98	248	17328	102	75	8	M14X45	230	
150	200	206	51	59	84	98	309	23207	119	89	10	M14X45	230	
160	210	216	51	59	84	98	309	24754	112	85	10	M14X45	230	
170	225	231	51	59	84	98	371	31561	126	95	12	M14X45	230	
180	235	241	51	59	84	98	371	33417	119	91	12	M14X45	230	
190	250	256	51	59	84	98	464	44097	141	107	15	M14X45	230	

**AC-SCE\_06**

Dimensiones Dimensions							Fuerza axial transmitida Transmitted Axial Force	Torque transmitido Transmitted torque	Presión de Contacto Contacting Pressure		Tornillo de bloqueo DIN912-12.9 DIN912-12.9 Locking Screw		
									Eje Shaft t	Centro Hub P1	n	Tamaño Size	Par de Bloqueo o Locking Torque
d	D	D1	L1	L2	L3	L	Ft	Mt	P	P1			
mm	mm	mm	mm	mm	mm	mm	KN	Nm	N/mm <sup>2</sup>	N/mm			Nm
200	260	266	51	59	84	98	464	46418	134	103	15	M14x45	230
220	285	291	64	72	100	116	501	55147	105	81	12	M16X60	355
240	305	311	64	72	100	116	627	75207	120	95	15	M16X60	355
260	325	331	64	72	100	116	752	97775	133	107	18	M16X60	355
280	355	361	75	83	123	141	812	113657	114	90	16	M18X80	485
300	375	381	75	83	123	141	913	136987	120	96	18	M18X80	485
320	405	411	90	98	142	162	1170	187177	120	95	18	M20X100	690
340	425	431	90	98	142	162	1365	232015	132	105	21	M20X100	690
360	455	461	110	118	166	188	1433	257988	107	84	18	M22X110	930
380	475	481	110	118	166	188	1672	317711	118	94	21	M22X110	930
400	495	501	100	118	166	188	1672	334433	123	100	21	M22X110	930

**AC-SCE\_07**

Dimensiones Recomendadas  
Recommended Dimensions:  
h8 Shaft: h8  
H8 Hub: H8



Dimensiones Dimensions							Fuerza axial transmitida Transmitted Axial Force	Torque transmitido Transmitted torque	Presión de Contacto Contacting Pressure		Tornillo de bloqueo DIN912-12.9 DIN912-12.9 Locking Screw		
									Eje Shaft t	Centro Hub P1	n	Tamaño Size	Par de Bloqueo o Locking Torque
d	D	D1	L1	L2	L3	L	Ft	Mt	P	P1			
mm	mm	mm	mm	mm	mm	mm	KN	Nm	N/mm <sup>2</sup>	N/mm			Nm
19	47	56	17	22	28	34	26	243	234	94		M6X20	17
20	47	56	17	22	28	34	26	256	222	94		M6X20	17
22	47	56	17	22	28	34	26	282	202	94		M6X20	17
24	50	59	17	22	28	34	31	368	222	106		M6X20	17
25	50	59	17	22	28	34	31	383	213	106		M6X20	17
28	55	64	17	22	28	34	31	429	190	97		M6X20	17
30	55	64	17	22	28	34	31	460	177	97		M6X20	17
32	60	69	17	22	28	34	41	655	222	118		M6X20	17
35	60	69	17	22	28	34	41	716	203	118		M6X20	17
38	65	74	17	22	28	34	41	778	187	109		M6X20	17
40	65	74	17	22	28	34	41	819	178	109		M6X20	17

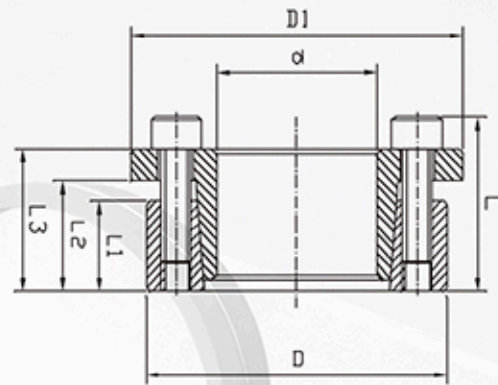
AC-SCE\_07

Dimensiones Recomendadas

Recommended Dimensions:

h8 Shaft: h8

H8 Hub: H8



Dimensiones Dimensions							Fuerza axial transmitida Transmitted Axial Force	Torque transmitido Transmitted torque	Presión de Contacto Contacting Pressure		Tornillo de bloqueo DIN912-12.9 DIN912-12.9 Locking Screw		
									Eje Shaft P	Centro Hub P1	n	Tamaño Size	Par de Bloqueo o Locking Torque Ts
d	D	D1	L1	L2	L3	L	Ft	Mt	N/m <sup>2</sup>	N/mm			Nm
42	75	84	20	25	33	41	65	1361	227	127	7	M8X25	41
45	75	84	20	25	33	41	65	1458	212	127	7	M8X25	41
50	80	89	20	25	33	41	65	1620	191	119	7	M8X25	41
55	85	94	20	25	33	41	74	2037	199	129	8	M8X25	41
60	90	99	20	25	33	41	74	2223	182	121	8	M8X25	41
65	95	104	20	25	33	41	83	2710	189	129	9	M8X25	41
70	110	119	24	30	40	50	120	4203	211	134	8	M10X30	83
75	115	124	24	30	40	50	120	4754	197	128	8	M10X30	83
80	120	129	24	30	40	50	120	4804	184	123	8	M10X30	83
85	125	134	24	30	40	50	135	5742	195	133	9	M10X30	83
90	130	139	24	30	40	50	135	6080	184	128	9	M10X30	83
95	135	144	24	30	40	50	150	7131	194	137	10	M10X30	83
100	145	154	26	32	44	56	175	8732	198	137	8	M12X35	145
110	155	164	26	32	44	56	175	9605	180	128	8	M12X35	145
120	165	174	26	32	44	56	196	11787	186	135	9	M12X35	145
130	180	189	34	40	52	64	262	17024	175	126	12	M12X35	145
140	190	199	34	40	54	68	267	18703	166	122	9	M14X40	230
150	200	209	34	40	54	68	297	22259	172	129	10	M14X40	230
160	210	219	34	40	54	68	326	26119	177	135	11	M14X40	230
170	225	234	44	50	64	78	356	30276	140	106	12	M14X40	230
180	235	244	44	50	64	78	356	32057	133	102	12	M14X40	230
190	250	259	44	50	64	78	445	42302	157	119	15	M14X40	230
200	260	269	44	50	64	78	445	44528	149	115	15	M14X40	230
220	285	295	50	56	75	91	481	52902	129	100	12	M16X50	355
240	305	315	50	56	75	91	601	72135	148	116	15	M16X50	355
260	323	335	50	56	75	91	641	83370	145	116	16	M16X50	355
280	355	365	60	66	87	105	803	112463	141	111	16	M18X50	500
300	375	385	60	66	87	105	904	135562	148	118	18	M18X50	500
320	405	414	7	81	101	121	1234	197493	140	110	18	M20X50	690
340	425	434	7	81	101	121	1440	244816	153	123	21	M20X50	690
360	455	464	86	94	116	138	1512	272218	131	104	18	M22X60	930
380	475	484	86	94	116	138	1764	335239	145	116	21	M22X60	930
400	495	504	86	94	116	138	1764	352884	137	111	21	M22X60	930

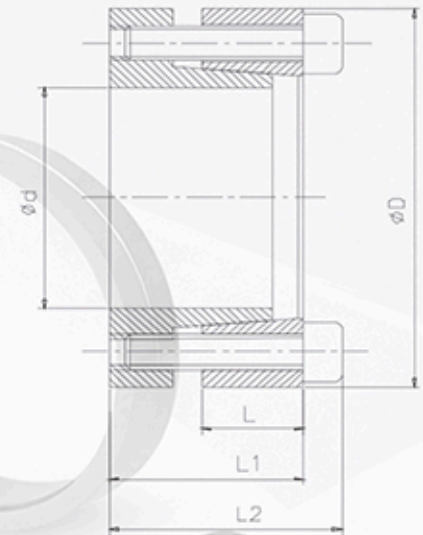
AC-SCE\_11

Dimensiones Recomendadas

Recommended Dimensions:

h8 Shaft: h8

H8 Hub: H8



Dimensiones Dimensions					Fuerza axial transmitida Transmitted Axial Force	Torque transmitido Transmitted torque	Presión de Contacto Contacting Pressure		Tornillo de bloqueo DIN912-12.9 DIN912-12.9 Locking Screw		
							Eje Shaft	Centro Hub	n	Tamaño Size	Par de Bloqueo Locking Torque
d	D	L	L1	L2	Ft	Mt	P	P1			Ts
mm	mm	mm	mm	mm	KN	Nm	N/mm <sup>2</sup>	N/mm <sup>2</sup>			Nm
20	47	14	28	34	29	294	328	139	5	M6X25	13
22	47	14	28	34	29	323	298	139	5	M6X25	13
24	50	14	28	34	38	455	353	169	6	M6X25	14
25	50	14	28	34	38	474	338	169	6	M6X25	14
30	55	14	28	34	51	569	282	154	6	M6X25	14
35	30	14	28	34	51	885	322	188	8	M6X25	14
38	65	14	28	34	51	961	297	174	8	M6X25	14
40	65	18	28	34	76	1012	282	174	8	M6X25	14
42	75	18	35	43	76	1594	313	176	7	M8X30	32
45	75	18	35	43	76	1707	293	176	7	M8X30	32
50	80	18	35	43	76	1897	263	165	7	M8X30	32
55	85	18	35	43	87	2387	274	177	8	M8X30	32
60	90	18	35	43	87	2604	251	167	8	M8X30	32
65	95	18	35	43	98	3172	260	178	9	M8X30	32
70	110	24	46	56	141	4937	262	167	8	M10X40	65

AC-SCE\_12

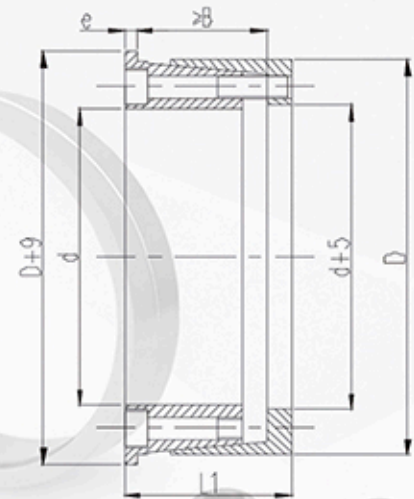
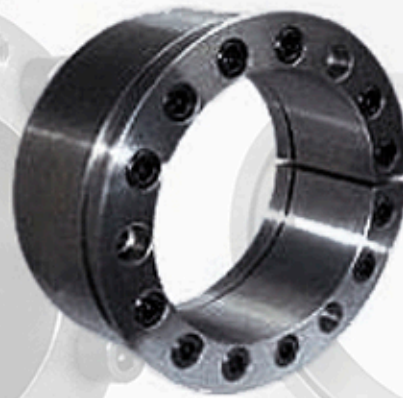
Dimensiones Recomendadas

Recommended Dimensions:

h8 Shaft: h8

H8 Hub: H8

Similar to JB/T 7934 Standard



Dimensiones Dimensions					Fuerza axial transmitida Transmitted Axial Force	Torque transmitido Transmitted torque	Presión de Contacto Contacting Pressure		Tornillo de bloqueo DIN912-12.9 DIN912-12.9 Locking Screw		
							Eje Shaft	Centro Hub	n	Tamaño Size	Par de Bloqueo Locking Torque
d	D	L	L1	L2	Ft	Mt	P	P1			Ts
mm	mm	mm	mm	mm	KN	Nm	N/mm <sup>2</sup>	N/mm <sup>2</sup>			Nm
100	145	75	5	65	192	9.6	102	70	8	M12X60	145
110	155	75	5	65	191	10.5	93	66	8	M12X60	145
120	165	75	5	65	216	13	96	70	9	M12X60	145
130	180	84	6	72	287	17.8	100	78	12	M12X70	145
140	190	84	6	72	287	20.2	94	69	12	M12X70	145
150	200	84	6	72	287	21.6	88	66	12	M12X70	145
160	210	84	6	72	360	28.8	101	77	15	M12X70	145
170	225	84	6	72	383	32.6	101	76	16	M12X70	145
180	235	84	6	72	431	38.8	108	80	18	M12X70	145
190	250	94	6	81	493	46.8	106	80	15	M14X75	230
200	260	94	6	81	526	52.8	100	77	16	M14X75	230
220	285	94	6	81	640	70	119	92	14	M16X75	355
240	305	112	7	98	731	88	96	75	16	M16X90	355
260	325	112	7	98	822	107	103	82	18	M16X90	355
280	355	120	8	106	910	128	96	75	20	M16X100	355
300	375	120	8	106	1000	151	99	79	22	M16X100	355
320	405	142	8	125	1280	206	101	80	18	M20X120	690
340	425	142	8	125	1420	242	106	85	20	M20X120	690
360	455	159	8	140	1770	319	113	89	20	M22X130	930
380	475	159	8	140	1770	337	109	87	20	M22X130	930
400	485	159	8	140	1770	355	101	83	20	M22X130	930
420	515	159	8	140	1980	410	107	87	22	M22X130	930

AC-SCE\_13

Dimensiones Recomendadas

Recommended Dimensions:

h8 Shaft: h8

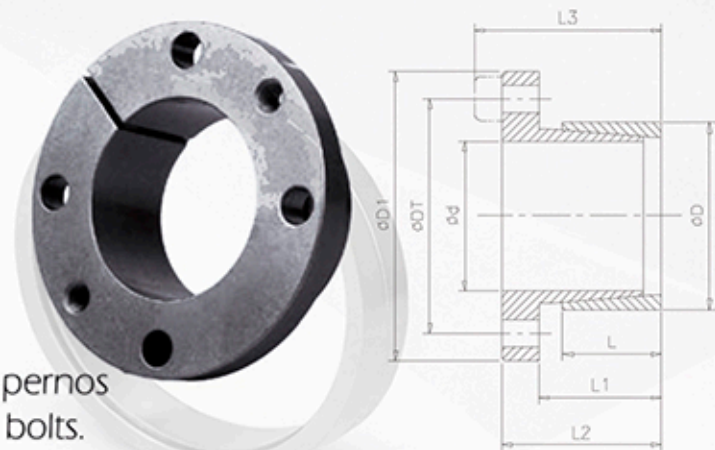
H8 Hub: H8

Dispositivo de bloqueo Satisfy JB/T7934 z14

Satisfy JB/T7934 z14 Locking Device

El dispositivo de bloqueo estándar no incluye pernos

The standard locking device does not include bolts.



Dimensiones Dimensions								Fuerza axial transmitida Transmitted Axial Force	Torque transmitido Transmitted torque	Presión de Contacto Contacting Pressure		Tornillo de bloqueo DIN912-12.9 DIN912-12.9 Locking Screw		
										Eje Shaft	Centro Hub	n	Tamaño Size	Par de Bloqueo o Locking Torque
d	D	D1	DT	L	L1	L2	L3	Ft	Mt	P	P1			Ts
mm	mm	mm	mm	mm	mm	mm	mm	KN	Nm	N/mm <sup>2</sup>	N/mm <sup>2</sup>			Nm
14									64	109				
16	25	42	33	16	20	26	30	9	73	96	0	4	M4	2.9
18									82	85				
19									87	81				
20									152	127				
22	30	50	39	16	20	26	31	15	167	116	65	4	M5	6
24									182	106				
25									190	102				
28	36	55	45	16	20	26	31	15	213	91	57	4	M5	6
30									228	85				
32									243	80				
35	42	62	51	16	20	28	33	5	266	73	50	4	M5	6
36									274	71				
38	44	66	54	16	20	28	34	21	400	93	65	4	M6	10
40	48	70	58	16	20	28	34	21	421	88	61	4	M6	10
42									442	84				
45	55	82	67	20	25	35	43	40	890	118	79	4	M8	25
48									949	110				
50	62	89	74	20	25	35	43	40	989	106	72	4	M8	25
55									1088	96				
60	72	99	84	20	25	35	43	40	1187	88	63	4	M8	25
65									1286	82				

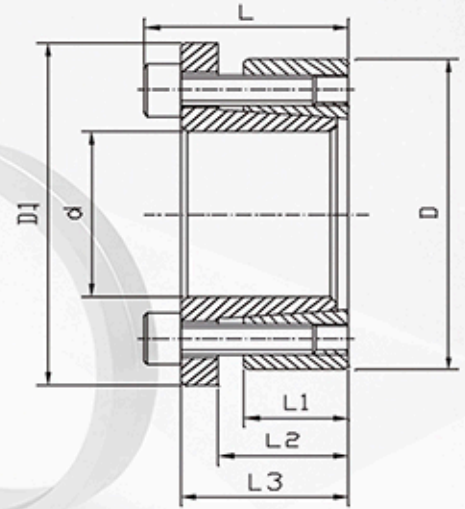
AC-SCE\_15

Dimensiones Recomendadas

Recommended Dimensions:

h8 Shaft: h8

H8 Hub: H8



Dimensiones Dimensions							Fuerza axial transmitida Transmitted Axial Force	Torque transmitido Transmitted torque	Presión de Contacto Contacting Pressure		Tornillo de bloqueo DIN912-12.9 DIN912-12.9 Locking Screw		
									Eje Shaft P	Centro Hub P1	n	Tamaño Size	Par de Bloqueo o Locking Torque Ts
d	D	D1	L1	L2	L3	L	Ft	Mt	N/mm <sup>2</sup>	N/mm <sup>2</sup>			Nm
14	55	62	17	22	30	38	33	234	415	106	4	M8X25	37
16	55	62	17	22	30	38	33	268	363	106	4	M8X25	37
18	55	62	17	22	30	38	37	333	357	117	4	M8X25	41
19	55	62	17	22	30	38	37	352	338	117	4	M8X25	41
20	55	62	17	22	30	38	37	370	321	117	4	M8X25	41
22	55	62	17	22	30	38	37	407	292	117	4	M8X25	41
24	55	62	17	22	30	38	37	445	268	117	4	M8X25	41
25	55	62	17	22	30	38	37	463	257	117	4	M8X25	41
28	55	62	17	22	30	38	37	519	229	117	4	M8X25	41
30	55	62	17	22	30	38	37	556	214	117	4	M8X25	41
24	65	72	17	22	30	38	46	556	335	124	5	M8X25	41
25	65	72	17	22	30	38	46	579	321	124	5	M8X25	41
28	65	72	17	22	30	38	46	649	287	124	5	M8X25	41
30	65	72	17	22	30	38	46	695	268	124	5	M8X25	41
32	65	72	17	22	30	38	46	741	251	124	5	M8X25	41
35	65	72	17	22	30	38	46	811	230	124	5	M8X25	41
38	65	72	17	22	30	38	46	917	211	124	5	M8X25	41
40	65	72	17	22	30	38	46	966	201	124	5	M8X25	41
30	80	87	17	22	30	41	65	972	318	119	7	M8X25	41
32	80	87	17	22	30	41	65	1037	299	119	7	M8X25	41
35	80	87	17	22	30	41	65	1134	273	119	7	M8X25	41
38	80	87	17	22	30	41	65	1231	251	119	7	M8X25	41
40	80	87	17	22	30	41	65	1296	239	119	7	M8X25	41
42	80	87	17	22	30	41	65	1361	227	119	7	M8X25	41
45	80	87	17	22	30	41	65	1458	212	119	7	M8X25	41
48	80	87	17	22	30	41	65	1555	199	119	7	M8X25	41
50	80	87	17	22	30	41	65	1620	191	119	7	M8X25	41

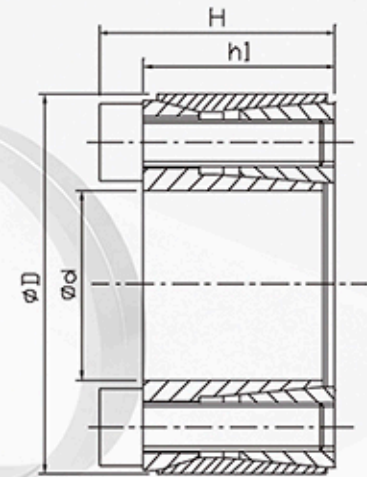
AC-SCE\_16

Dimensiones Recomendadas

Recommended Dimensions:

h8 Shaft: h8

H8 Hub: H8



Dimensiones Dimensions				Fuerza axial transmitida Transmitted Axial Force	Torque transmitido Transmitted torque	Presión de Contacto Contacting Pressure		Tornillo de bloqueo DIN912-12.9 DIN912-12.9 Locking Screw			
						Eje Shaft	Centro Hub	n	Tamaño Size	Par de Bloqueo Locking Torque	
d	D	H	h1	Ft	Mt	P	P1				Ts
mm	mm	mm	mm	KN	Nm	N/mm <sup>2</sup>	N/mm <sup>2</sup>				
16	32	22	18	8	66	93	47	4	M4X16	5.1	
18	40	24	18	18	165	185	83	4	M6X16	17	
19	41	24	18	18	174	176	81	4	M6X16	17	
20	42	24	18	18	183	167	79	4	M6X16	17	
22	44	24	18	18	201	152	76	4	M6X16	17	
24	46	24	18	27	329	209	109	6	M6X16	17	
25	47	24	18	27	343	200	106	6	M6X16	17	
28	50	24	18	27	384	179	100	6	M6X16	17	
30	52	24	18	27	412	167	96	6	M6X16	17	
32	54	24	18	27	439	156	93	6	M6X16	17	
35	57	28	21.5	27	480	117	72	6	M6X16	17	
36	58	28	21.5	36.5	659	151	94	8	M6X16	17	
38	60	28	21.5	36.5	695	143	91	8	M6X16	17	
40	62	28	21.5	36.5	732	136	88	8	M6X16	17	
42	70	36	28	68	1427	185	111	8	M8X25	42	
45	73	36	28	687	1529	172	106	8	M8X25	42	
48	76	36	28	68	1631	161	102	8	M8X25	42	
50	78	36	28	68	1699	155	99	8	M8X25	42	
55	83	36	28	68	1869	141	93	8	M8X25	42	
60	88	36	28	68	2039	129	88	8	M8X25	42	
65	93	45	35	68	2208	93	65	8	M8X25	42	
70	105	45	35	107	3759	137	91	8	M10X30	83	
75	110	45	35	107	4027	128	87	8	M10X30	83	
80	115	45	35	107	4296	120	83	8	M10X30	83	
85	120	45	35	134	5705	141	100	10	M10X30	83	
90	125	45	35	134	6041	133	96	10	M10X30	83	
100	138	45	35	134	6712	120	87	10	M10X30	83	

AC-SCE\_17

Dimensiones Recomendadas

Recommended Dimensions:

h8 Shaft: h8

H8 Hub: H8



Dimensiones Dimensions					Fuerza axial transmitida Transmitted Axial Force	Torque transmitido Transmitted torque	Presión de Contacto Contacting Pressure		Tornillo de bloqueo DIN912-12.9 DIN912-12.9 Locking Screw		
							Eje Shaft	Centro Hub	n	Tamaño Size	Par de Bloqueo Locking Torque
d	D	D1	H	h1	Ft	Mt	P	P1			
mm	mm	mm	mm	mm	KN	Nm	N/mm <sup>2</sup>	N/mm <sup>2</sup>			Nm
14	25	32	17	6.5	7	52	241	135	1	M20X1	95
15	25	32	17	6.5	7	56	225	135	1	M20X1	95
16	25	32	17	6.5	7	60	211	135	1	M20X1	95
18	30	38	17.5	6.5	10	91	256	154	1	M25X1.5	160
19	30	38	18	6.5	10	96	242	154	1	M25X1.5	160
20	30	38	18	6.5	10	102	230	154	1	M25X1.5	160
24	35	45	18	6.5	12	139	218	150	1	M30X1.5	220
25	35	45	18	6.5	12	144	210	150	1	M30X1.5	220
28	40	52	18	6.5	15	215	248	174	1	M35X1.5	340
30	40	52	20	8	15	230	188	141	1	M35X1.5	340
35	45	58	22	8	19	331	199	155	1	M40X1.5	480
40	50	65	25	10	24	477	176	141	1	M45X1.5	680
45	55	70	26	10	27	617	180	147	1	M50X1.5	870
48	60	75	26	10	28	669	171	137	1	M55X2	970
50	60	75	26	10	28	697	164	137	1	M55X2	970
55	65	80	27	12	29	796	129	109	1	M60X2	1100
60	70	85	29	12	32	946	129	111	1	M60X2	1300

AC-SCE\_18

Dimensiones Recomendadas

Recommended Dimensions:

h8 Shaft: h8

H8 Hub: H8



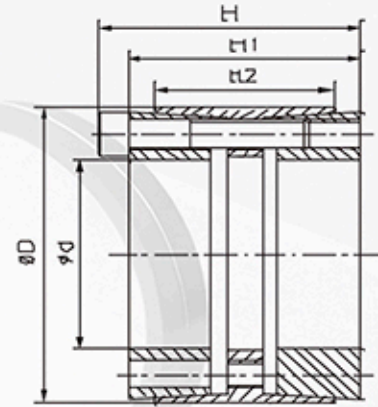
Dimensiones Dimensions				Fuerza axial transmitida Transmitted Axial Force	Torque transmitido Transmitted torque	Presión de Contacto Contacting Pressure		Tornillo de bloqueo DIN912-12.9 DIN912-12.9 Locking Screw		
d	D	L	L1			Eje Shaft	Centro Hub	n	Tamaño Size	Par de Bloqueo Locking Torque
mm	mm	mm	mm	Ft	Mt	P	P1			Ts
				KN	Nm	N/mm <sup>2</sup>	N/mm <sup>2</sup>		Nm	
10	20	15.5	13	3.8	19	89	45	4	M2.5X12	1.2
11	22	15.5	13	3.8	21	81	41	4	M2.5X12	1.2
12	22	15.5	13	3.5	23	75	41	4	M2.5X12	1.2
14	26	20	17	5.5	39	71	38	4	M3X16	2.1
15	28	20	17	5.5	42	66	35	4	M3X16	2.1
16	32	21	17	9.6	77	107	54	4	M4X16	4.9
17	35	25	21	9.6	82	81	40	4	M4X20	4.9
18	35	25	21	9.6	87	77	40	4	M4X20	4.9
19	35	25	21	9.6	91	73	40	4	M4X20	4.9
20	38	26	21	15.7	157	113	60	4	M5X20	10
22	40	26	21	15.7	173	103	57	4	M5X20	10
24	47	32	26	22.3	268	110	56	4	M6X24	17
25	47	32	26	22.3	279	105	56	4	M6X24	17
28	50	32	26	33.5	468	141	79	6	M6X24	17
30	55	32	26	33.5	502	132	72	6	M6X24	17
32	55	32	26	33.5	535	123	72	6	M6X24	17
35	60	37	31	44.6	791	125	73	8	M6X28	17
38	65	37	31	44.6	484	115	67	8	M6X28	17
40	65	37	31	44.6	892	110	67	8	M6X28	17
42	75	44	36	60.6	1272	122	68	6	M8X34	41
45	75	44	36	60.6	1363	113	68	6	M8X34	41
48	80	44	36	80.8	1938	142	85	8	M8X34	41
50	80	44	36	80.8	2019	136	85	8	M8X34	41

AC-SCE\_19

Dimensiones Recomendadas  
Recommended Dimensions:

h8 Shaft: h8

H8 Hub: H8



Dimensiones Dimensions					Fuerza axial transmitida Transmitted Axial Force	Torque transmitido Transmitted torque	Presión de Contacto Contacting Pressure		Tornillo de bloqueo DIN912-12.9 DIN912-12.9 Locking Screw			
							Eje Shaft	Centro Hub	n	Tamaño Size	Par de Bloqueo Locking Torque	
d	D	H	H1	H2	Ft	Mt	P	P1				Ts
mm	mm	mm	mm	mm	KN	Nm	N/mm <sup>2</sup>	N/mm <sup>2</sup>			Nm	
25	55	46	40	32	64	799	314	107	6	M6X25	17	
28	55	46	40	32	64	895	281	107	6	M6X25	17	
30	55	46	40	32	64	959	262	107	6	M6X25	17	
35	60	60	54	44	75	1306	185	83	7	M6X45	17	
38	75	62	54	44	135	2567	308	121	7	M8X50	17	
40	75	62	54	44	135	2702	293	121	7	M8X50	17	
42	75	62	54	44	135	2837	279	121	7	M8X50	41	
45	75	62	54	44	135	3040	260	121	7	M8X50	41	
48	80	72	64	56	154	3707	216	102	8	M8X55	41	
50	80	72	64	56	154	3861	207	102	8	M8X55	41	
55	85	72	64	56	154	4779	212	108	9	M8X55	41	
60	90	72	64	56	193	5793	216	113	10	M8X55	41	
65	95	72	64	56	193	6276	199	107	10	M8X55	41	
70	110	88	78	70	313	10951	235	120	10	M10X60	83	
75	115	88	78	70	313	11733	220	115	10	M10X60	83	
80	120	88	78	70	344	13768	227	121	11	M10X60	83	
85	125	88	78	70	376	15959	233	127	12	M10X60	83	
90	130	88	78	70	376	16898	220	122	12	M10X60	83	
95	135	88	78	70	376	17837	208	117	12	M10X60	83	
100	145	112	100	90	501	25029	211	113	11	M12X80	145	
110	155	112	100	90	546	30039	209	115	12	M12X80	145	
120	165	112	100	90	637	38226	224	127	14	M12X80	145	
130	180	130	116	104	743	48270	201	117	12	M14X90	230	
140	060	130	116	104	866	60654	217	129	14	M14X90	230	
150	200	130	116	104	928	69628	217	132	15	M14X90	230	
160	210	130	116	104	990	79220	217	134	16	M14X90	230	
170	226	164	148	134	1186	100851	206	116	14	M16X110	360	
180	235	164	148	134	1271	114414	208	119	15	M16X110	360	
190	250	164	148	134	1356	128814	210	119	16	M16X110	360	
200	260	164	148	134	1356	135594	200	115	16	M16X110	360	
220	285	164	148	134	1526	167805	204	118	18	M16X110	360	
240	305	166	150	134	1626	195100	182	131	20	M16X110	360	
260	325	166	150	134	1707	221930	176	129	21	M16X110	360	
280	355	197	177	165	2244	314194	179	131	18	M20X130	690	
300	375	197	177	165	2494	374042	186	138	20	M20X130	678	
320	405	197	177	165	2618	418936	183	134	21	M20X130	690	
340	425	197	177	165	2743	466307	180	134	22	M20X130	690	

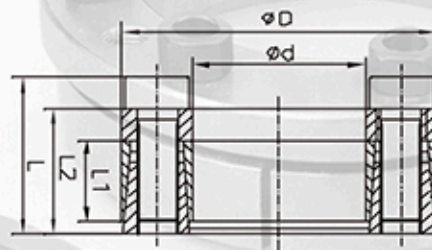
Dimensiones Dimensions					Fuerza axial transmitida Transmitted Axial Force	Torque transmitido Transmitted torque	Presión de Contacto Contacting Pressure		Tornillo de bloqueo DIN912-12.9 DIN912-12.9 Locking Screw		
							Eje Shaft	Centro Hub	n	Tamaño Size	Par de Bloqueo Locking Torque
d	D	H	H1	H2	Ft	Mt	P	P1			
mm	mm	mm	mm	mm	KN	Nm	N/mm <sup>2</sup>	N/mm <sup>2</sup>			Nm
360	455	225	203	190	3208	577426	173	130	21	M22X150	930
380	475	225	203	190	3361	638541	172	130	22	M22X150	930
400	495	225	203	190	3666	733255	178	137	24	M22X150	930
420	515	225	203	190	3666	769918	169	131	24	M22X150	930
440	535	225	203	190	3666	807670	162	130	24	M22X150	930
460	555	225	203	190	3666	844390	155	128	24	M22X150	930
480	575	225	203	190	4275	1027650	173	145	28	M22X150	930
500	595	225	203	190	4275	1071000	166	140	28	M22X150	930
520	615	225	203	190	4600	1193400	171	144	30	M22X150	930
540	635	225	203	190	4600	1239300	164	139	30	M22X150	930
560	655	225	203	190	4896	1371050	169	144	32	M22X150	930
580	675	225	203	190	4896	1419500	163	141	32	M22X150	930
600	695	225	203	190	5040	1514700	163	141	33	M22X150	930

**AC-SCE\_20**


 Dimensiones Recomendadas  
 Recommended Dimensions:

h8 Shaft: h8

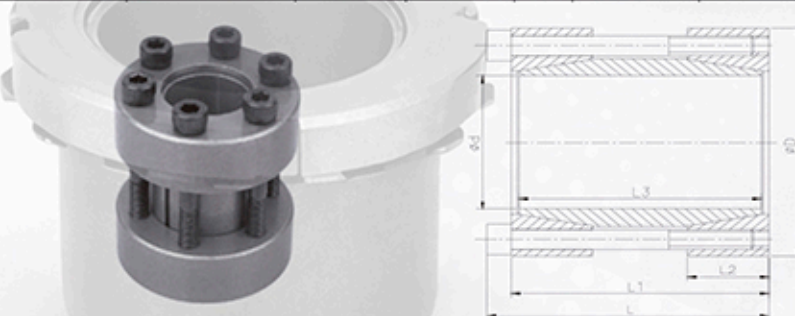
H8 Hub: H8



Dimensiones Dimensions					Fuerza axial transmitida Transmitted Axial Force	Torque transmitido Transmitted torque	Presión de Contacto Contacting Pressure		Tornillo de bloqueo DIN912-12.9 DIN912-12.9 Locking Screw		
							Eje Shaft	Centro Hub	n	Tamaño Size	Par de Bloqueo Locking Torque
d	D	L	L1	L2	Ft	Mt	P	P1			
mm	mm	mm	mm	mm	KN	Nm	N/mm <sup>2</sup>	N/mm <sup>2</sup>			Nm
18	40	24.5	12	18.5	23	207	204	92	6	M6X15	15
19	41	24.5	12	18.5	23	219	193	89	6	M6X15	15
20	42	24.5	12	18.5	23	230	183	87	6	M6X15	15
24	46	24.5	12	18.5	23	276	153	80	6	M6X15	15
25	47	24.5	12	18.5	31	383	196	104	8	M6X15	15
28	50	24.5	12	18.5	31	429	175	98	8	M6X15	15
30	52	24.5	12	18.5	31	460	163	94	8	M6X15	15
35	57	28	15	22	46	805	176	108	12	M6X15	15
38	60	28	15	22	46	874	162	103	12	M6X15	15
40	62	28	15	22	46	920	154	99	12	M6X15	15
42	70	36	18	28	81	1692	202	121	12	M8X22	35
45	73	36	18	28	81	1813	189	116	12	M8X22	35
48	76	36	18	28	81	1934	177	112	12	M8X22	35
50	78	36	18	28	81	2014	170	109	12	M8X22	35
55	83	36	18	28	107	2952	206	136	16	M8X22	35
60	88	36	18	28	107	3221	188	128	16	M8X22	35
70	105	45	22	35	129	4513	155	103	12	M10X25	70
80	115	45	22	35	172	6877	181	126	16	M10X25	70

**AC-SCE\_21**
**Dimensiones Recomendadas  
Recommended Dimensions:**
**h8 Shaft: h8**
**h8 Hub: H8**


Dimensiones Dimensions					Fuerza axial transmitida Transmitted Axial Force	Torque transmitido Transmitted torque	Presión de Contacto Contacting Pressure		Tornillo de bloqueo DIN912-12.9 DIN912-12.9 Locking Screw		
							Eje Shaft	Centro Hub	n	Tamaño Size	Par de Bloqueo Locking Torque
d	D	D1	H	h1	Ft	Mt	P	P1			
Mm	mm	mm	mm	mm	KN	Nm	N/mm <sup>2</sup>	N/mm <sup>2</sup>			Nm
15	25	32	31	20	9	77	91	55	1	M20X1	95
18	30	38	33	21	13	125	98	59	1	M25X1.5	160
19	30	38	33	21	13	132	93	59	1	M25X1.5	160
20	30	38	33	21	13	139	88	59	1	M25X1.5	160
24	35	45	38	25	15	202	74	51	1	M30X1.5	220
25	35	45	38	25	15	210	71	51	1	M30X1.5	220
28	40	52	44	28	20	312	76	53	1	M35X1.5	340
30	40	52	44	28	20	335	71	53	1	M35X1.5	340
35	45	58	45	28	25	483	75	58	1	M40X1.5	480
40	50	65	46	28	31	696	82	66	1	M45X1.5	680
45	55	70	47	28	36	902	84	69	1	M50X1.5	870
50	60	75	47	28	37	1014	77	64	1	M55X2	970
55	65	80	48	28	38	1158	73	61	1	M60X2	1100
60	70	85	50	28	41	1379	73	62	1	M65X2	1300

**AC-SCE\_22**
**Dimensiones Recomendadas  
Recommended Dimensions:**
**h8 Shaft: h8**
**h8 Hub: H8**


Dimensiones Dimensions						Fuerza axial transmitida Transmitted Axial Force	Torque transmitido Transmitted torque	Presión de Contacto Contacting Pressure		Tornillo de bloqueo DIN912-12.9 DIN912-12.9 Locking Screw		
								Eje Shaft		n	Tamaño Size	Par de Bloqueo Locking Torque
d	D	L	L1	L2	L3	Ft	Mt	P				Ts
mm	mm	mm	mm	mm	mm	KN	Nm	N/mm <sup>2</sup>			Nm	
15	45	56	50	16	44	21	158	188	4	M6X45	17	
16	50	56	50	16	44	21	165	178	4	M6X45	17	
17	50	56	50	16	44	21	179	166	4	M6X45	17	
18	50	56	50	16	44	21	190	157	4	M6X45	17	
19	50	56	50	16	44	21	200	149	4	M6X45	17	
20	50	56	50	16	44	21	211	141	4	M6X45	17	
24	55	66	60	18.5	54	32	378	144	6	M6X55	17	
25	55	66	60	18.5	54	32	394	138	6	M6X55	17	
28	60	66	60	18.5	54	32	442	123	6	M6X55	17	

Dimensiones Dimensions						Fuerza axial transmitida Transmitted Axial Force	Torque transmitido Transmitted torque	Presión de Contacto Contacting Pressure		Tornillo de bloqueo DIN912-12.9 DIN912-12.9 Locking Screw		
								Eje Shaft		n	Tamaño Size	Par de Bloqueo Locking Torque
d	D	L	L1	L2	L3	Ft	Mt	P				Ts
mm	mm	mm	mm	mm	mm	KN	Nm	N/mm <sup>2</sup>				Nm
30	60	66	60	18.5	54	32	473	115		6	M6X55	17
32	63	66	60	18.5	54	32	505	108		6	M6X55	17
35	75	83	75	22	67	39	682	98		4	M8X70	42
38	75	83	75	22	67	39	741	90		4	M8X70	42
40	75	83	75	22	67	39	780	86		4	M8X70	42
42	78	83	75	22	67	39	819	82		4	M8X70	42
45	85	93	85	24.5	76	59	1317	101		6	M8X80	42
48	90	93	85	24.5	76	59	1405	95		6	M8X80	42
50	90	93	85	24.5	76	59	1463	91		6	M8X80	42
55	94	93	85	24.5	76	78	2147	110		8	M8X80	42
60	100	93	85	24.5	76	78	2343	101		8	M8X80	42
65	105	93	85	24.5	76	78	2538	93		8	M8X80	42
70	115	110	100	29	90	123	4321	116		8	M10X95	83

**AC-SCE\_33**

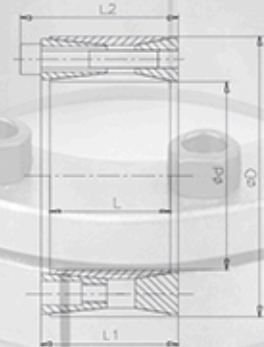
Dimensiones Recomendadas  
Recommended Dimensions:

h8 Shaft: h8

h8 Hub: H8

Dispositivo de bloqueo Satisfy JB/T7934 Z4

Satisfy JB/T7934 Z4 Locking Device



Dimensiones Dimensions					Fuerza axial transmitida Transmitted Axial Force	Torque transmitido Transmitted torque	Presión de Contacto Contacting Pressure		Tornillo de bloqueo DIN912-12.9 DIN912-12.9 Locking Screw		
							Eje Shaft	Centro Hub	n	Tamaño Size	Par de Bloqueo Locking Torque
d	D	L	L1	L2	Ft	Mt	P	P1			Ts
mm	mm	mm	mm	mm	KN	Nm	N/mm <sup>2</sup>	N/mm <sup>2</sup>			Nm
70	120	56	62	74	197	6850	201	117	8	M12X55	145
80	130	56	62	74	291	11650	263	162	12	M12X55	145
90	140	56	62	74	290	13000	234	150	12	M12X55	145
100	160	74	80	94	389	19700	213	133	12	M14X70	230
110	170	74	80	94	483	26600	242	157	14	M14X70	230
120	180	74	80	94	483	28900	222	148	15	M14X70	230
130	190	74	80	94	483	31200	205	140	15	M14X70	230
140	200	74	80	94	574	40200	227	159	17	M14X70	230
150	210	74	80	94	574	12900	212	152	18	M14X70	230
160	230	88	94	110	800	64000	227	158	17	M16X80	355
170	2470	88	94	110	800	67800	214	152	18	M16X80	355
180	250	88	94	110	923	83000	235	170	20	M16X80	355
190	260	88	94	110	923	88000	223	163	21	M16X80	355
200	270	88	94	110	1050	105000	242	179	23	M16X80	355
220	300	110	116	134	1120	123000	189	138	21	M18X100	485
240	320	110	116	134	1280	153000	198	148	24	M18X100	485
255	330	110	116	134	1282	160200	205	157	27	M18X100	485
260	340	110	116	134	1430	186000	205	157	27	M18X100	485
280	370	130	136	156	1650	230000	192	145	24	M20X110	690
300	390	130	136	156	1650	245000	179	138	24	M20X110	690

AC-SCE\_37

Dimensiones Recomendadas

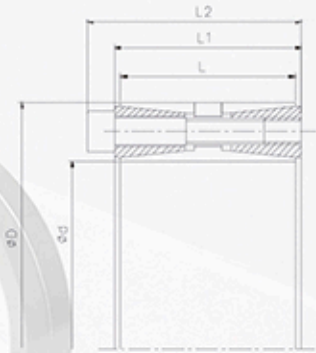
Recommended Dimensions:

h8 Shaft: h8

h8 Hub: H8

Dispositivo de bloqueo Satisfy JB/T7934 Z5

Satisfy JB/T7934 Z5 Locking Device

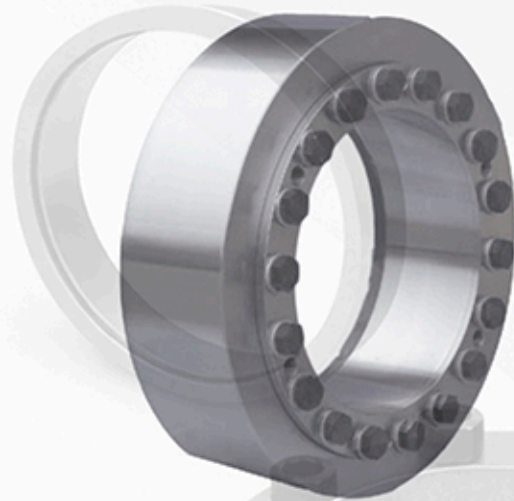


Dimensiones Dimensions					Fuerza axial transmitida Axial Force	Torque transmitido Transmitted torque	Presión de Contacto Contacting Pressure		Tornillo de bloqueo DIN912-12.9 DIN912-12.9 Locking Screw		
							Eje Shaft	Centro Hub	n	Tamaño Size	Par de Bloqueo Locking Torque
d	D	H	H1	H2	Ft	Mt	P	Pl			Ts
mm	mm	mm	mm	mm	KN	Nm	N/mm <sup>2</sup>	N/mm <sup>2</sup>			Nm
100	145	60	65	77	288	14400	192	132	10	M12X55	145
110	155	60	65	77	288	15950	175	123	10	M12X55	145
120	165	60	65	77	346	20750	192	139	12	M12X55	145
130	180	68	74	86	433	28100	193	139	15	M12X60	145
140	190	68	74	86	519	36300	214	157	18	M12X60	145
150	200	68	74	86	519	39000	200	150	18	M12X60	145
160	210	68	74	86	606	48500	219	167	21	M12X60	145
170	225	75	81	95	712	60600	215	162	18	M14X65	230
180	235	75	81	95	712	64100	203	155	18	M14X65	230
190	250	88	94	108	792	75200	178	135	20	M14X75	230
200	260	88	94	108	950	95000	203	156	24	M14X75	230
220	285	95	104	120	990	109000	183	141	18	M16X90	355
240	305	95	104	120	1318	153382	222	176	24	M16X90	355
250	315	95	104	120	1340	159773	215	170	24	M16X90	355
260	325	95	104	120	1370	173085	215	172	25	M16X90	355
280	355	120	126	144	1590	217622	188	149	24	M18X110	485
300	375	120	126	144	1650	242887	183	146	25	M18X110	485
320	405	135	142	162	2140	332001	192	152	25	M20X120	690
340	425	135	142	162	2140	352751	181	144	25	M20X120	690
360	455	158	165	187	2670	455557	176	139	25	M22X130	930
380	475	158	165	187	2670	480866	166	133	25	M22X130	930
400	495	158	165	187	2670	506174	158	128	25	M22X130	930
420	515	158	165	187	3200	637762	181	147	30	M22X130	930
450	555	172	180	204	3700	809627	175	142	30	M24X150	1200
480	585	172	180	204	3950	921171	175	143	32	M24X150	1200
500	6905	172	180	204	3950	959553	168	139	32	M24X150	1200
530	640	190	200	227	4320	1129002	157	130	30	M27X160	1600
560	670	190	200	227	4320	1192908	148	124	30	M27X160	1600
600	710	190	200	227	4610	1363327	147	124	32	M27X160	1600

DISCOS RETRACTILES - SHRINK DISCS



DR\_SCE\_14 Standard Type  
DR\_SCE\_43 Light- loaded Type  
DR\_SCE\_41 Heavy- Loaded Type



DR\_SCE\_47- Shrink Discs

Características del disco retráctil de tres partes

Apropiado para trabajos pesados  
Montaje y desmontaje convenientes.  
Ampliamente utilizado en ejes huecos, engranajes deslizantes y acoplamientos, etc. y reemplaza la conexión de llave en ocasiones importantes.

Instrucciones

Mt significa par nominal transmitido (mientras la carga axial Ft es 0)  
Ft significa carga axial nominal (mientras que la carga de torsión Mt es 0)  
TS significa par de apriete de los pernos de bloqueo

Especificaciones técnicas

Torsión Mt

El par transmitido depende del factor de fricción entre el cubo del eje, la holgura y el diámetro del eje.

Characters of Three-part Shrink Disc

Appropriate for heavy duty  
Convenient assembly and disassembly  
Widely used In hollow shafts, sliding gears, and couplings, etc and replace key connection in important occasions.

Instructions

Mt means rated transmitted torque (while the axial loading Ft is 0)  
Ft means rated axial loading (while the torsional loading Mt is 0)  
TS means tightening torque of locking bolts

Technical Specifications

Torque Mt

The transmitted torque depends on the friction factor between the shaft hub, clearance and shaft diameter.

## ESPECIFICACIONES TÉCNICAS PARA DISCOS RETRACTILES DR\_SCE\_14/DR\_SCE\_43 Y DR\_SCE\_41

### TECHNICAL SPECIFICATIONS FOR DR\_SCE\_14/DR\_SCE\_43 AND DR\_SCE\_41 SHRINK DISCS

#### Factor de fricción

Todos los pares de la Tabla se calculan cuando el factor de fricción entre el eje y el cubo es 0,15 (el factor de fricción entre los aceros secos sin aceite es de 0,15-0,33). De lo contrario, se cambiará el par transmitido. Si el factor de fricción es 0,12 entre el eje y el cubo con lubricante, el par se reducirá correspondientemente.

#### Autorización

La tolerancia de coincidencia del eje y el eje principal es la siguiente: según dw:  
dw18-30H6/j6 dw31-50 H6/h6  
dw51-80H6/g6 dW81-500 H7/g6  
El par de torsión que aparece en la tabla se calcula en función del espacio libre máximo. Si el juego real entre el eje y el cubo es más estrecho, el par transmitido aumentará y viceversa (lo que significa que el par disminuirá si el juego real es mayor).

#### Diámetro dw del eje

El diámetro dw del eje de discos compresores del mismo tamaño puede ser diferente. Para obtener más detalles, consulte la tabla anterior. Para el diámetro real del eje incluido en los dos tamaños de discos de contracción en la Tabla, el par transmitido estará entre el par nominal correspondiente al dw de los ejes.

#### Materiales del cubo

El cubo puede estar hecho de acero o hierro dúctil. El rendimiento de los materiales deberá satisfacer los requisitos de aplicación de seguridad. Si es necesario transmitir momento flector (rotación-flexión), el par y el cubo serán de Acero tratado térmicamente 42CrMo4, Acero fundido de buena calidad o hierro dúctil.

Se puede utilizar hierro fundido gris si se puede desprejar el momento flector.

#### Calidad de la superficie

La rugosidad superficial (Ra) del eje y del cubo será menor que 3,2  $\mu\text{m}$ .

#### Friction Factor

All the torques in the Table are calculated when the friction factor between the shaft and hub is 0.15 (the friction factor between the dry steels without oil is 0.15-0.33). Otherwise, the transmitted torque Will be changed. If the friction factor is 0.12 between the shaft and hub with lubricant, the torque Will be reduced correspondingly.

#### Clearance

The matching tolerance of the hub and main shaft are as follow according to dw:  
dw18-30H6/j6 dw31-50 H6/h6  
dw51-80H6/g6 dW81-500 H7/g6  
The torque In the Table is calculated based upon the max.clearance. If the actual clearance between the shaft and hub is more tight, the transmitted torque will be increased and, vice versa (which means the torque will be decreased if the actual clearance is larger).

#### Diameter dw of the Shaft

The diameter dw of the shaft of the same-size shrink discs might be different. For more details, please refer to the above table. For the actual shaft diameter Included by the two shrink disks sizes in the Table, the transmitted torque Will be between the rated torque corresponding to the dw of the shafts

#### Materials of Hub

The hub can be made of Steel or ductile iron. They yielding of the materials shall satisfy the safety application requirements. If it is necessary to transmit bending moment (rotation bending), the torque and hub shall be made of heat-treat Steel 42CrMo4, good-quality cast Steel or ductile iron.

The gray cast iron can be used if the bending moment can be neglected.

#### Surface Quality

The surface roughness (Ra) of the shaft and hub shall be smaller than 3.2  $\mu\text{m}$ .

**DISCOS RETRACTORES**

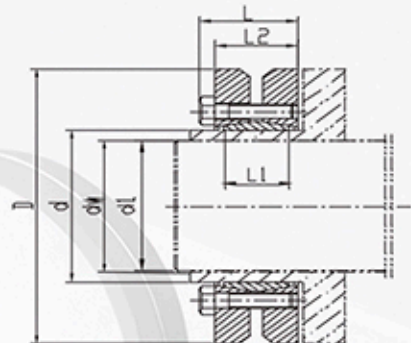
Tipo estándar

Similar al estándar JB/T 7934 Z7B

DR-SCE\_14 SHRINK DISCS

Standard Type

Similar to JB/T 7934 Z7B Standard



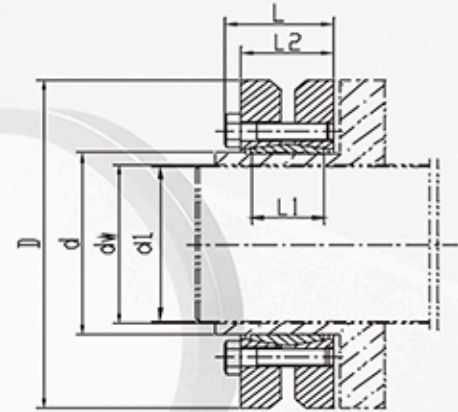
Dimensiones Dimensions							Fuerza axial transmitida Transmitted Axial Force	Torque transmitido Transmitted torque	Tornillo de bloqueo DIN912-12.9 DIN912-12.9 Locking Screw		
d	D	dw	L1	L2	L	C(dw-d1) Max. Clearance			Ft	Mt	n
mm	mm	mm	mm	mm	mm	mm	KN	Nm			Nm
24	50	19	14	19.5	23	0.017	23	216	6	M5X18	4
		20					27	265			
		21					30	314			
30	60	24	16	21.5	25	0.017	31	372	7	M5X18	4
		25					34	421			
		26					36	461			
36	72	26	18	23.5	27.5	0.032	36.3	471	5	M6X20	12
		28					39.3	550			
		30					47.5	713			
44	80	32	20	25.5	29.5	0.032	57.8	925	7	M6X20	12
		35					67.1	1175			
		36					70.8	1275			
50	90	38	22	27.5	31.5	0.032	69.1	1313	8	M6X25	12
		40					81.9	1638			
		42					91.7	1925			
55	100	42	23	30.5	34.5	0.032	69.0	1450	8	M6X25	12
		45					84.4	1900			
		48					97.9	2350			
62	110	48	23	30.5	34.5	0.048	116	2775	10	M6X25	12
		50					131	3275			
		52					139	3613			
68	115	50	23	30.5	34.5	0.048	100	2500	10	M6X25	12
		55					114	3125			
		60					131	3938			
75	138	55	25	32.5	37.8	0.048	114	3125	7	M8X30	30
		60					133	4000			
		65					152	4938			
80	145	60	25	32.5	37.8	0.048	133	4000	7	M8X30	30
		65					150	4875			
		70					164	5750			
90	155	65	30	39	44.3	0.048	183	5938	10	M8X35	30
		70					214	7500			
		75					242	9063			
100	170	70	34	44	49.3	0.048	246	8625	12	M8X35	30
		75					250	9375			
		80					281	11250			
110	185	75	39	50	56.4	0.048	240	9000	9	M10X40	59
		80					281	11250			
		85					318	13500			
115	188	85	39	50	57	0.048	271	11500	10	M10X40	59
		90					350	15750			
		95					395	18750			
125	215	85	42	54	60.4	0.069	324	13750	12	M10X40	59
		90					361	16250			
		95					395	18750			
140	230	95	46	60.5	68	0.069	397	18875	10	M12X45	100
		100					440	22000			
		105					479	25125			
155	265	105	50	64.5	72	0.069	524	27500	12	M12X50	100
		110					568	31250			
		115					609	35000			
165	290	115	56	71	81	0.069	674	38750	8	M16X55	250
		120					729	43750			
		125					780	48750			
175	300	125	56	71	81	0.079	720	45000	8	M16X55	250
		130					788	51250			
		135					833	56250			
185	330	135	71	86	96	0.079	963	65000	10	M16X65	250
		140					1018	71250			
		145					1069	77500			
195	350	140	71	86	96	0.079	1161	81250	12	M16X65	250
		150					1267	95000			
		155					1315	101875			
200	350	150	71	86	96	0.079	1233	92500	12	M16X65	250
		155					1290	100000			
		160					1344	107500			

DISCOS RETRACTORES  
Tipo estándar

Similar al estándar JB/T 7934 Z7B  
DR-SCE\_14 SHRINK DISCS  
Standard Type  
Similar to JB/T 7934 Z7B Standard

Dimensiones Dimensions							Fuerza axial transmitida Transmitted Axial Force	Torque transmitido Transmitted torque	Tornillo de bloqueo DIN912-12.9 DIN912-12.9 Locking Screw		
d	D	dw	L1	L2	L	C(dw-d1) Max. Clearance			n	Tamaño Size	Par de Bloqueo Locking Torque
mm	mm	mm	mm	mm	mm	mm	Ft	Mt		Ts	
							KN	Nm		Nm	
220	370	160	88	104	114	0.079	1484	118750	15	M16X75	250
		165					1545	127500			
		170					1618	137500			
240	405	180	92	109	122	0.079	1765	150000	12	M20X80	490
		190					1917	172500			
		190					2053	195000			
260	430	200	103	120	133	0.09	2158	205000	14	M20X90	490
		210					2300	230000			
		210					2440	256250			
280	460	220	114	134	147	0.09	2583	271250	16	M20X100	490
		230					2773	305000			
		230					2935	337500			
300	485	230	122	142	155	0.09	2989	343750	18	M20X100	490
		240					3073	368750			
		245					3214	393750			
320	520	240	122	142	155	0.09	3250	390000	20	M20X100	490
		250					3400	425000			
		260					3596	467500			
340	570	250	134	156	169	0.101	3900	487500	24	M20X110	490
		260					4063	528125			
		270					4259	575000			
350	580	270	140	162	175	0.101	4093	552500	24	M20X110	490
		280					4286	600000			
		285					4386	625000			
360	590	280	140	162	175	0.101	4134	578750	24	M20X110	490
		290					4328	627500			
		295					4424	652500			
380	645	290	144	168	183	0.101	4888	708750	20	M24X120	840
		300					5083	762500			
		310					5306	822500			
390	660	300	144	168	183	0.101	5200	780000	21	M24X120	840
		310					5411	838750			
		320					5609	897500			
400	680	315	144	168	183	0.111	5317	837500	21	M24X120	840
		320					5430	868750			
		330					5636	930000			
420	690	330	164	188	203	0.111	5909	975000	24	M24X130	840
		340					5176	1050000			
		350					6429	1125000			
440	750	340	177	202	217	0.111	5926	1007500	24	M24X140	840
		350					6143	1075000			
		360					6368	1146250			
460	770	360	177	202	217	0.111	6944	1250000	28	M24X140	840
		370					7230	1337500			
		380					9211	1750000			
480	800	380	188	213	228	0.111	7697	1452500	30	M24X140	840
		390					7949	1550000			
		400					8188	1637500			
500	850	400	188	213	230	0.123	7213	1442500	24	M27X150	1100
		410					7405	1518000			
		420					7619	1600000			
530	910	430	213	238	255	0.123	10581	2275000	30	M27X160	1100
		440					11023	2425222			
		450					11444	2575000			
560	940	450	228	260	277	0.123	11111	2500000	30	M27X160	1100
		460					11576	2662500			
		470					12021	2825000			
590	980	470	254	286	303	0.123	11968	2812500	36	M27X170	1100
		480					12500	3000000			
		490					13010	3187500			
620	1020	500	260	292	311	0.136	13500	3375000	30	M30X190	1640
		510					14020	3575000			
		520					14519	3775000			
660	1070	530	260	292	311	0.136	14623	38775000	30	M30X190	1640
		540					15185	4100000			
		550					15727	4325000			
700	1180	560	278	310	329	0.136	15402	4312500	36	M30X190	1640
		575					16087	4625000			
		590					16737	4937500			
750	1250	600	296	334	355	0.136	18333	5500000	40	M30X200	1640
		615					19106	5875000			
		630					19841	6250000			
800	1370	645	332	370	389	0.154	20930	6750000	45	M30X210	1640
		660					21780	7187500			
		670					22761	7625000			

DISCOS RETRACTORES DE CARGA PESADA  
 Similar al estándar JB/T 7934 Z7B  
 DR\_SCE\_ 41 HEAVY- LOADED SHRINK DISCS  
 Similar to JB/T 7934 Z7B Standard



Dimensiones Dimensions							Fuerza axial transmitida Transmitted Axial Force	Torque transmitido Transmitted torque	Tornillo de bloqueo DIN912-12.9 DIN912-12.9 Locking Screw		
d	D	dw	L1	L2	L	C(dw-d1) Max. Clearance	Ft	Mt	n	Tamaño Size	Par de Bloqueo Locking Torque
mm	mm	mm	mm	mm	mm	mm	KN	Nm			Nm
140	230	95	60	74	82	0.069	488	23175	12	M12X55	100
		100					529	26438			
		105					568	29813			
155	263	105	66	84	92	0.069	569	29858	15	M12X60	100
		110					634	34875			
		115					665	38250			
165	290	115	72	88	98	0.069	802	46125	10	M16X65	250
		120					863	51750			
		125					913	57038			
175	300	125	72	88	98	0.079	1260	78750	15	M16X80	250
		130					1359	88308			
		135					1417	95625			
185	330	135	92	112	122	0.079	1200	81000	14	M16X80	250
		140					1414	99000			
		145					1490	108000			
195	350	140	92	112	122	0.079	1366	95625	14	M16X80	250
		150					1388	104063			
		155					1452	112500			
200	350	145	92	112	122	0.079	1971	142875	15	M16X80	250
		150					2040	153000			
		155					2127	164813			
220	370	160	114	134	144	0.079	2180	174375	20	M16X90	250
		165					2400	198000			
		170					2621	222750			
240	405	170	120	144	157	0.079	2819	239625	15	M20X100	490
		180					3000	270000			
		190					3174	301500			
260	430	190	136	160	173	0.09	3375	320625	18	M20X110	490
		200					3600	360000			
		210					3804	399375			
280	460	210	148	172	185	0.09	3654	383625	21	M20X120	490
		220					3845	423000			
		230					3854	443250			
300	485	230	152	176	189	0.09	3336	383625	22	M20X120	490
		240					3525	423000			
		245					3618	443250			
320	520	240	160	184	197	0.09	3544	425250	24	M20X130	490
		250					3735	466875			
		260					3903	507375			
340	570	250	176	200	215	0.101	4406	550688	21	M24X130	840
		260					4587	596250			
		270					4877	650250			
350	580	270	176	200	215	0.101	4633	625500	21	M24X130	840
		280					4854	679500			
		285					4966	707625			
360	590	280	180	204	219	0.101	4918	688500	22	M24X140	840
		290					5144	745875			
		295					5255	775125			
380	645	290	180	204	219	0.101	4795	695250	22	M24X140	840
		300					5010	721500			
		310					5219	808875			
390	660	300	188	212	227	0.101	5310	796500	24	M24X140	840
		310					5531	857250			
		320					5727	916313			

**DISCOS RETRACTORES LIGEROS**

Similar al estándar JB/T 7934 Z7B

**DR\_SCE\_41 LIGHT- LOADED SHRINK DISCS**

Similar to JB/T 7934 Z7B Standard

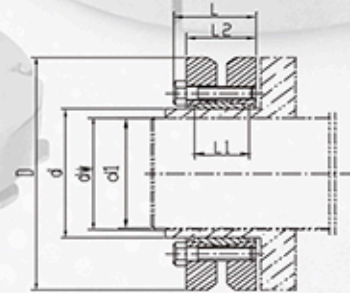
Dimensiones Dimensions							Fuerza axial transmitida Transmitted Axial Force	Torque transmitido Transmitted torque	Tornillo de bloqueo DIN912-12.9 DIN912-12.9 Locking Screw		
d	D	dw	L1	L2	L	C(dw-d1) Max. Clearance			Ft	Mt	n
mm	mm	mm	mm	mm	mm	mm	KN	Nm			Nm
400	680	315	188	212	227	0.111	5464	860625	24	M24X140	840
		320					5541	886500			
		330					5761	950625			
420	690	330	214	238	253	0.111	6811	1123875	30	M24X150	840
		340					7068	1201500			
		350					7329	1282500			
440	750	340	224	252	269	0.111	6161	1047420	24	M27X170	1100
		350					6393	1118700			
		360					6622	1191960			
460	770	360	224	252	269	0.111	7260	1306800	28	M27X170	1100
		370					7599	1405800			
		380					7816	1485000			
480	800	380	246	274	291	0.111	7998	1519650	30	M27X180	1100
		390					8255	1609740			
		400					8514	1702800			
500	850	400	246	274	291	0.123	8663	1732500	32	M27X180	1100
		410					8886	1821600			
		420					9146	1920600			

**DISCOS RETRACTORES LIGEROS**

Similar al estándar JB/T 7934 Z7B

**DR\_SCE\_43 LIGHT- LOADED SHRINK DISCS**

Similar to JB/T 7934 Z7B Standard



Dimensiones Dimensions							Fuerza axial transmitida Transmitted Axial Force	Torque transmitido Transmitted torque	Tornillo de bloqueo DIN912-12.9 DIN912-12.9 Locking Screw		
d	D	dw	L1	L2	L	C(dw-d1) Max. Clearance			Ft	Mt	n
mm	mm	mm	mm	mm	mm	mm	KN	Nm			Nm
125	185	95	39	51	58	0.069	278	13200	8	M10X40	59
		100					303	15125			
		105					329	17250			
140	220	110	39	51	58	0.069	336	18500	9	M10X40	59
		120					388	23300			
		125					410	25625			
155	245	130	39	51	58	0.069	462	30000	11	M10X40	59
		135					489	33000			
		140					518	36250			
165	260	135	46	62	70	0.079	593	40000	10	M12X50	100
		140					629	44000			
		145					664	48125			
175	275	145	46	62	70	0.079	672	48750	11	M12X50	100
		150					707	53000			
		155					742	57500			

DISCOS RETRACTORES LIGEROS  
 Similar al estándar JB/T 7934 Z7B  
 DR\_SCE\_43 LIGHT- LOADED SHRINK DISCS  
 Similar to JB/T 7934 Z7B Standard

Dimensiones Dimensions							Fuerza axial transmitida Transmitted Axial Force	Torque transmitido Transmitted torque	Tornillo de bloqueo DIN912-12.9 DIN912-12.9 Locking Screw		
d	D	dw	L1	L2	L	C(dw-d1) Max. Clearance mm	Ft	Mt	n	Tamaño Size	Par de Bloqueo Locking Torque
mm	mm	mm	mm	mm	mm	mm	KN	Nm			Ts
											Nm
185	295	155	46	62	70	0.79	752	58250	12	M12X50	100
		160					786	62875			
		165					818	67500			
195	315	165	56	72	80	0.079	1064	87750	15	M12X55	100
		170					996	84625			
		175					1036	90625			
200	330	175	56	72	80	0.079	1057	92500	16	M12X60	100
		180					1104	99375			
		185					1142	105625			
220	345	180	66	84	94	0.079	1150	103500	10	M16X65	250
		190					1230	116875			
		200					1313	131250			
240	370	200	66	84	94	0.079	1413	141250	12	M16X65	250
		210					1518	159375			
		215					1564	168125			
260	395	220	72	92	102	0.09	1693	186250	14	M16X70	250
		230					1793	206250			
		235					1840	216250			
280	425	230	84	104	114	0.09	1859	213750	16	M16X75	250
		240					1969	236250			
		250					2080	260000			
300	460	250	84	104	114	0.09	2150	268750	18	M16X75	250
		260					2250	292500			
		270					2361	318750			
320	495	270	84	106	116	0.09	2407	325000	20	M16X75	250
		280					2536	355000			
		290					2638	382500			
340	535	290	84	106	116	0.101	2586	375000	21	M16X75	250
		300					2700	405000			
		305					2762	421250			
350	545	300	100	122	135	0.101	3100	465000	16	M20X90	490
		305					3156	481250			
		310					3226	500000			
360	555	300	100	122	135	0.101	3000	450000	16	M20X90	490
		310					3129	485000			
		320					3242	518750			
380	585	320	112	136	149	0.101	3398	543750	18	M20X100	490
		325					3469	563750			
		330					3538	583750			
390	595	330	112	136	149	0.101	3829	631750	20	M20X100	490
		340					3971	675000			
		350					4121	721250			
400	615	340	112	136	149	0.111	4044	687500	21	M20X100	490
		350					4193	733750			
		360					4347	782500			
420	630	350	120	144	157	0.111	4129	722500	22	M20X100	490
		360					4285	771250			
		370					4426	818750			
440	660	370	120	144	157	0.111	4574	846250	24	M20X100	490
		380					4730	898750			
		390					4885	952500			
460	685	390	132	158	171	0.111	5385	1050000	28	M20X110	490
		400					5563	1125000			
		410					5707	1170000			
480	715	410	132	158	171	0.111	5433	1113750	28	M20X110	490
		420					5601	1176250			
		425					5682	1207500			
500	750	425	132	158	171	0.123	5800	1232500	30	M20X110	490
		430					5890	1266250			
		440					6057	1332500			